

COATINGS THICKNESS GUIDE

18/12/89

First Number: Wet Film Thickness (mils)
Second Number: Dry Film Thickness (mils)
Third Number: Coverage Rate (ft²/gal)

BLAZELOK™ 

PRODUCT	BLAZELOK TBX	BLAZELOK IB4
SEALECTION 500*	17/11/90	5/3/300
AGRIBALANCE	23/15/83	9/5/175
DEMILEC APX	17/11/85	NOT REQUIRED**
HEATLOK HFO HIGH LIFT	18/12/100	NOT REQUIRED**
HEATLOK XT HIGH YIELD	18/12/100	NOT REQUIRED**
HEATLOK XT HIGH LIFT	18/12/100	NOT REQUIRED**
HEATLOK SOY 200 PLUS	17/11/92	NOT REQUIRED**

DC315

PRODUCT	DC315 (TB)	DC315 (IB)
SEALECTION 500*	18/12/89	4/3/400
AGRIBALANCE	18/12/89	4/3/400
DEMILEC APX	18/12/89	NOT REQUIRED**
HEATLOK HFO HIGH LIFT	18/12/89	NOT REQUIRED**
HEATLOK XT HIGH YIELD	18/12/89	NOT REQUIRED**
HEATLOK XT HIGH LIFT	18/12/89	NOT REQUIRED**
HEATLOK SOY 200 PLUS	18/12/89	NOT REQUIRED**

*IN UNVENTED ATTIC ASSEMBLIES, SEALECTION 500 CAN BE INSTALLED WITHOUT AN IGNITION BARRIER. SEE CCRR-1063 FOR DESIGN CRITERIA.

**FOR ADDITIONAL INFORMATION REFER TO THE PRODUCT TECHNICAL DATA SHEET, ESR, AND/OR CCRR.

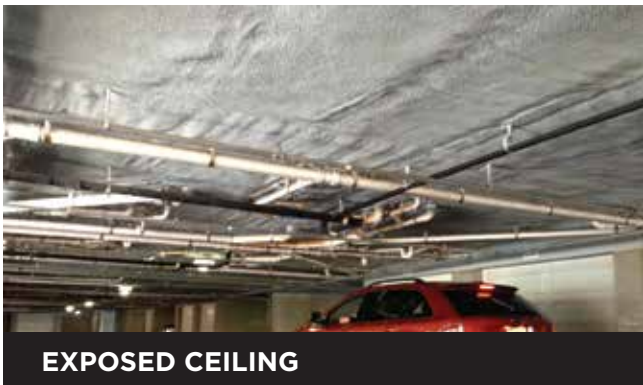


© 2017 Demilec, 3315 E. Division St., Arlington, TX 76011
 Phone: 817.640.4900 | Fax: 817.633.2000
 Info@Demilec.com | www.Demilec.com

THERMAL BARRIERS

IBC 2603.4 / IRC 314.4

All spray foam insulation must be separated from the interior of the building by a 15 minute thermal barrier. Also, attics and crawl spaces that are determined to be “used for storage” also require thermal barriers.



IGNITION BARRIERS

IBC 2603.4.1.6 / IRC R314.5.3

Attics and crawl spaces that are used for “access for utilities only” require an ignition barrier. Sealection 500 and Agribalance require ignition barriers in attics accessed for utilities only. Heatlok HFO High Lift, Heatlok XT High Yield, Heatlok XT High Lift, Heatlok Soy 200 Plus and Demilec APX passed the NFPA 286 Appendix X without any coatings and therefore require no additional coatings in attics accessed for utilities only.



**FOR MORE QUESTIONS CONTACT
YOUR DEMILEC REPRESENTATIVE OR
THE DEMILEC BUILDING SCIENCE DEPT.
(817) 640-4900**