

**HUNTSMAN**

BUILDING SOLUTIONS

# Radon Protection

How It Works

Radon Protection with the  
World's Leading Spray Foam

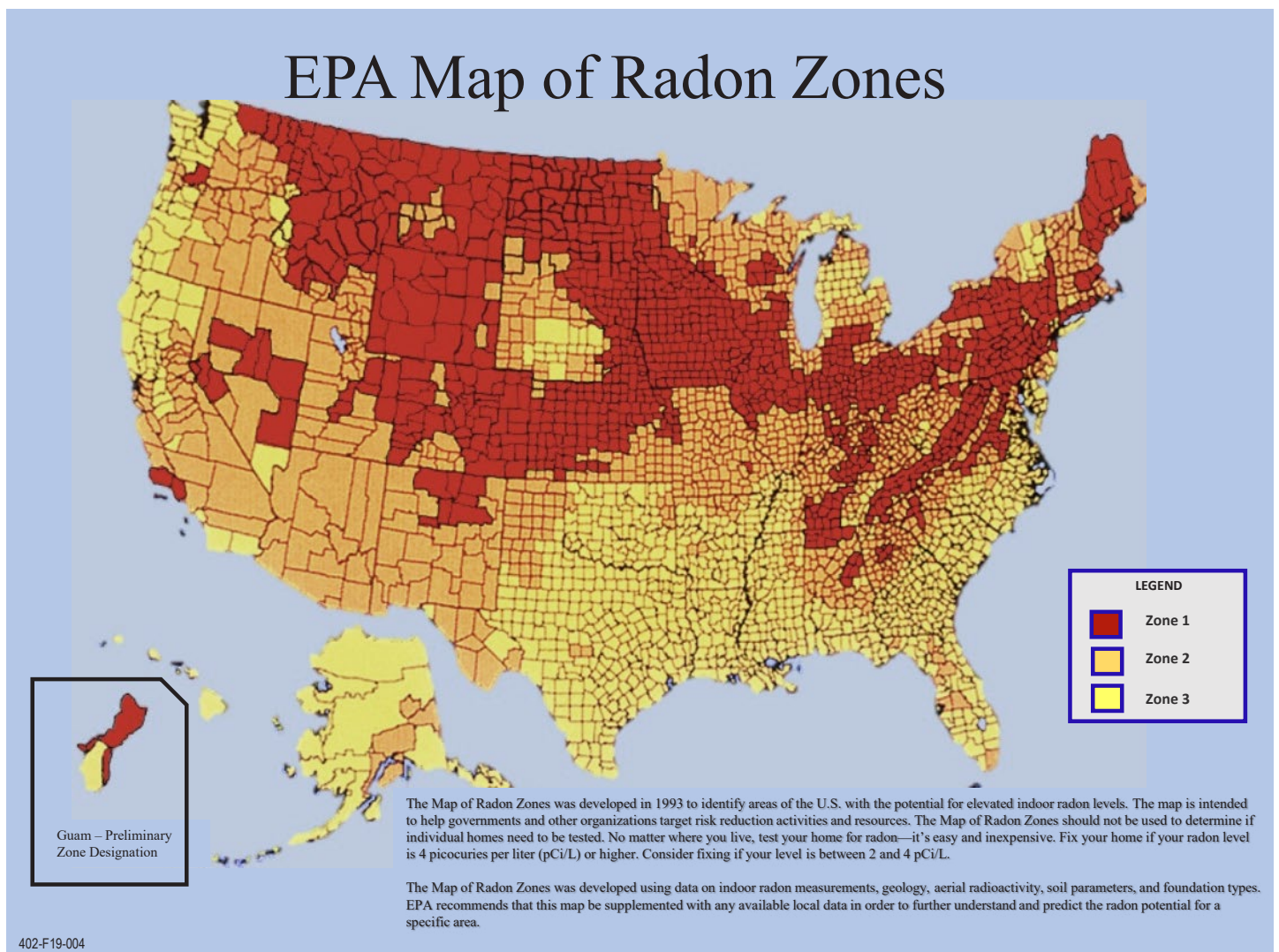
Heatlok HFO Pro is Produced in the USA and consists of  
22% of recycled and renewable content

# What is Radon?

Radon, a colorless, odorless, radioactive gas, is the second leading cause of lung cancer. Heavier than air, radon can accumulate in basements, increasing the risk of exposure to the homeowner.

Radon can infiltrate through several places, especially cracks or openings in the floor slab, cracks in the foundation wall, or sumps. The Environmental Protection Agency (EPA) and The American Lung Association recommend testing for radon in your home.

## EPA Map of Radon Zones



Source: EPA

## Here are the EPA's recommendations for reducing radon infiltration in basements:

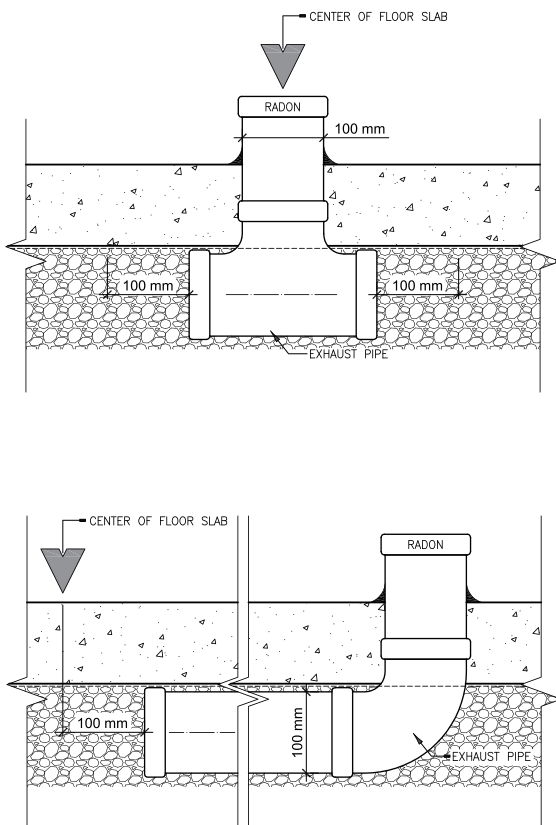
- Install a membrane or sealing product under the floor slab
- Seal the joint between the foundation wall and the floor slab
- Seal all openings in the foundation wall and floor slab
- Seal all posts and load-bearing walls to the floor slab and membrane
- Install floor drains that prevent gas infiltration
- Install sealed lid on sumps

# How to Build a Radon-Free Basement

These are the 6 steps to build a radon-proof basement in a new building:

## 1. Install A Depressurization Pipe

A perforated 4 inch diameter pipe must be installed in 3/4 inch gravel net and run to the center of the surface of the floor slab. This pipe is installed preventatively and will be connected to an exhaust fan if, after the work is completed, a test shows a radon concentration over 4 pCi/L (150 Bq/m<sup>3</sup>).





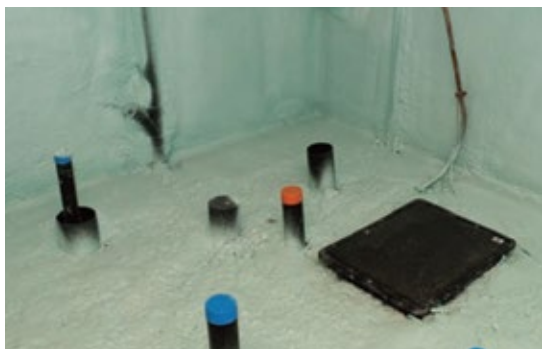
## 2. Install An Air Barrier

Heatlok HFO Pro is an ICC compliant air barrier product, in accordance with standard ASTM 2178, and provides perfect air-tightness under the foundation slab, as well as being insulating. Heatlok HFO Pro is radon gas resistant, as demonstrated by K124/02/95 (method C of ISO/TS 11665-13) and is 65 times more effective than a 6-mil polyethylene membrane at 1.25" (32mm). The minimum thickness to apply is 1.25" (32mm) to meet insulation, airtightness and vapor barrier requirements.



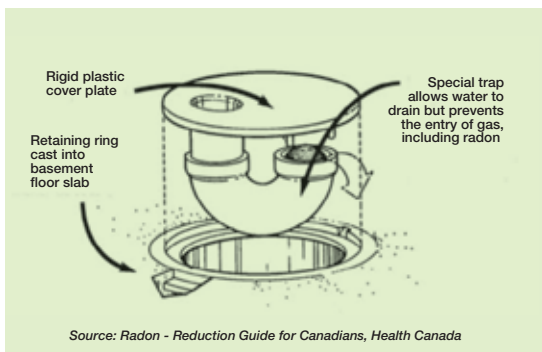
## 3. Seal The Joints

The perfect continuity of insulation achieved with Heatlok HFO Pro seals all joints, providing seamless insulation from the slab to the foundation wall all the way up to the rim joist. The product is sprayed on-site and molds perfectly to the building structure. The continuity between the airtight slab and the wall is perfect. The installation of Heatlok HFO Pro requires no sealant, tape or cutting of materials, so there are no compatibility issues between materials.



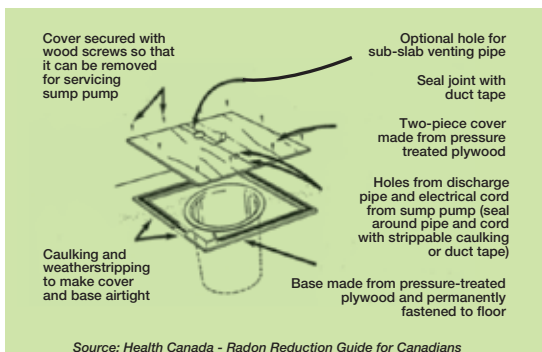
## 4. Seal All Openings

Heatlok HFO Pro seals openings and posts, leaving no room for error. The product seals and expands 30 times its initial volume in 5 seconds.



## 5. Install Floor Drains

Radon can use water as a vehicle for infiltration. It is, therefore, important to install floor drains that are specifically designed to prevent gas infiltration.



## 6. Install A Sealed Lid on Sumps

Sumps can communicate directly with the gravel. It is therefore important to use specifically designed sealed lids.

# Protection Requirements

The basement can often be a high risk area: high humidity, floods, mold, etc. With the new energy requirements of The International Residential Code (IRC), it is recommended to insulate under the basement concrete slab. Where required, the insulation must have a minimum value of R-5 full surface or R-7.5 for 4 feet (1.2 metre) around the perimeter. In addition, IRC Appendix F, recommends the installation of protection against radon gas entry. Heatlok HFO Pro provides superior insulation, a perfect air barrier system and a vapor barrier all in one single application. It also prevents soil gases, mainly radon, from entering the building. In short, the occupants are warm, comfortable and protected from radon.

With an R value of R-7.4/inch, Heatlok HFO Pro, applied 1.25” (32 mm) thick, provides  $R-7.4 \times 1.25 = R-9.25$  insulation under the entire surface of the slab, exceeding Building Code requirements. Due to its high compression strength (31 psi), Heatlok HFO Pro can be sprayed directly on crushed stone and provides continuous insulation with no joints.

During construction, workers can move with wheelbarrows and equipment without damaging Heatlok HFO Pro; it will not crack or break. The entire basement can be sprayed in a single step. Application is very quick and generates no waste.

The EPA recommends the safe threshold for radon gas in buildings. In addition to its high insulation factor, Heatlok HFO Pro acts as an air and vapor retarder. 1.25” (32 mm) of product exceeds the air barrier material requirements of the code by 500 times, creating an air barrier system. The product is tested in accordance with Standard ASTM 2178 and ASTM 283. When applied, the product adheres and expands 30 times its initial volume in 5 seconds.

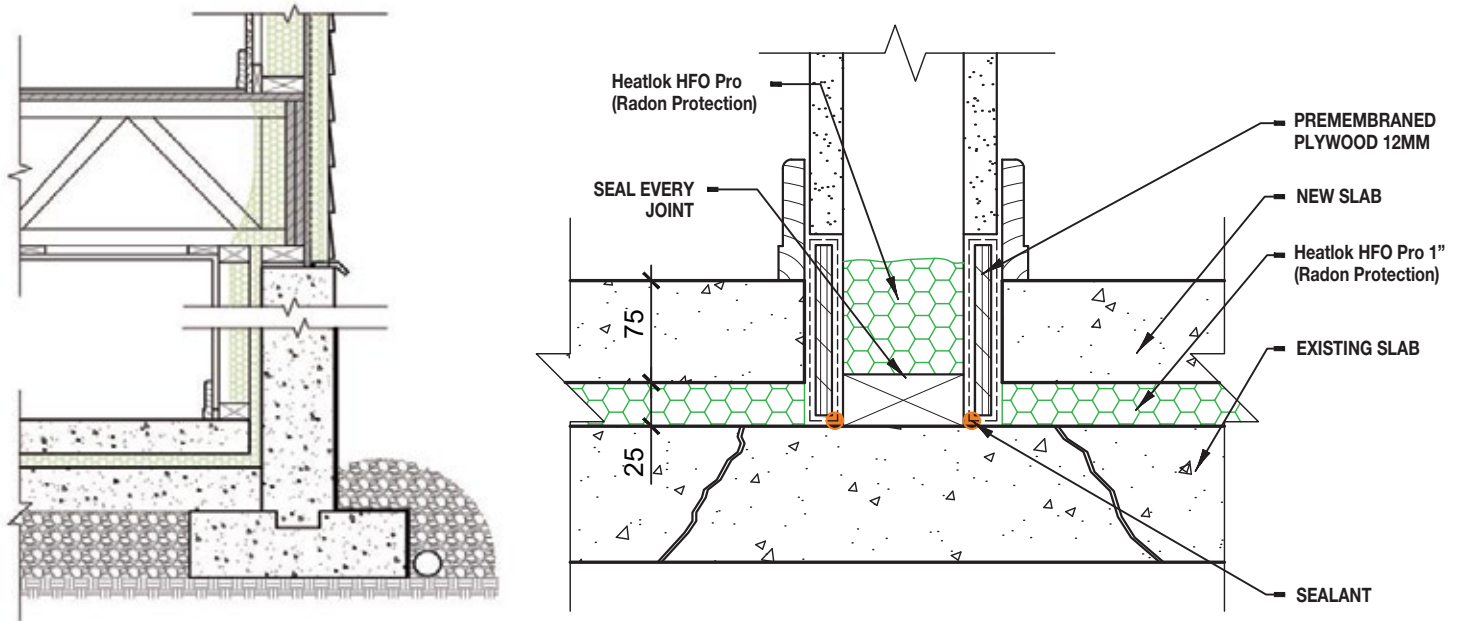
**TABLE R403.3(1)**

**MINIMUM FOOTING DEPTH AND INSULATION REQUIREMENTS FOR FROST-PROTECTED FOOTINGS IN HEATED BUILDINGS**

AIR FREEZING INDEX (°F - DAYS)	MINIMUM FOOTING DEPTH, D (INCHES)	VERTICAL INSULATION R-VALUE	HORIZONTAL INSULATION R-VALUE	
			ALONG WALLS	AT CORNERS
1,500 OR LESS	12	4.5	NOT REQUIRED	NOT REQUIRED
2,000	14	5.6	NOT REQUIRED	NOT REQUIRED
2,500	16	6.7	1.7	4.9
3,000	16	7.8	6.5	8.6
3,500	16	9.0	8.0	11.2
4,000	16	10.1	10.5	13.1

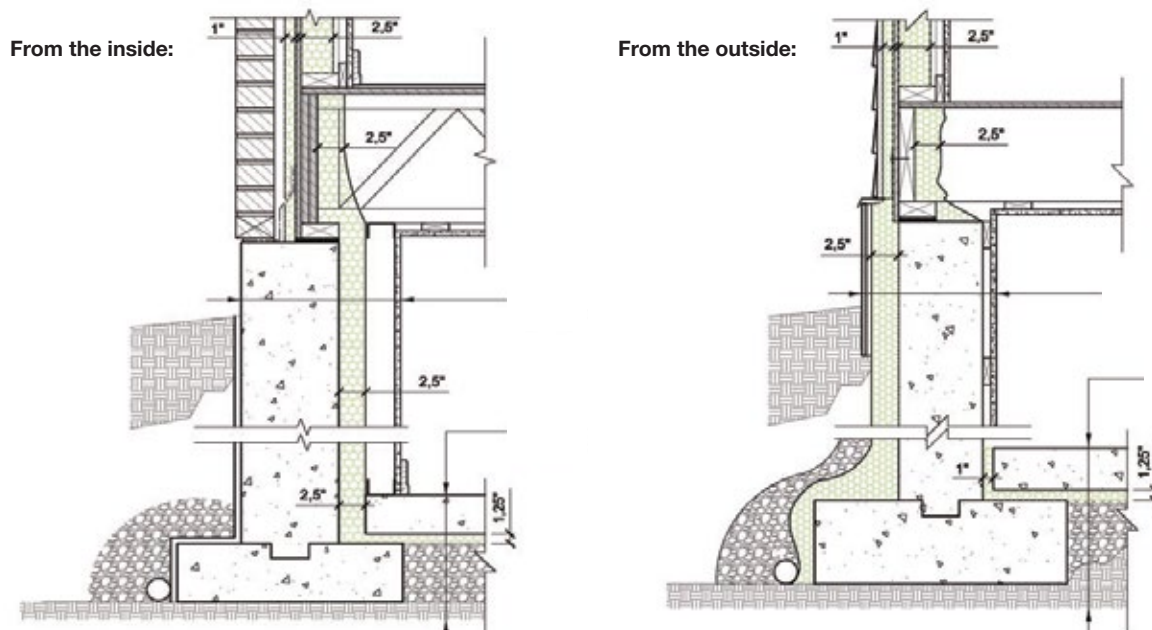
# Renovation

A simple solution to prevent radon infiltration in existing buildings. Spray Heatlok HFO Pro on the existing slab, the foundation wall, and the rim joist, and then pour a new slab. It is important to verify the floor/ceiling height, since this will add approximately 4" to the floor thickness.



# New Construction

Preventing radon gas infiltration in new construction is even simpler.





## The Solution For Lasting Comfort

A basement is a high-humidity area prone to mold and mildew development. According to independent laboratory testing (ASTM C 1338), mold will not grow in Heatlok HFO Pro, as it is not a nutrient source for bacteria. The product is water and humidity resistant. Numerous studies have shown that it is the ideal insulation for Class 1 flood zones as it has the highest rating (Class 5) for flood resistant materials. The spray polyurethane foam may remain in place even after a flood. The foam does not degrade and, once dry, Heatlok HFO Pro recovers all of its physical properties.

In short, the installation of Heatlok HFO Pro under the slab and on foundation walls saves time and materials, while providing lasting superior-quality insulation and airtightness at a competitive price. Heatlok HFO Pro is suitable for application on all building types and its installation generates no waste or job site trash. The product is sold in liquid form in returnable or recycled containers, therefore there is no excess packaging.

To see the Radon performance test video, [click here](#).

### References

1. Passive Radon Control System for New Construction. (May 1995). United States Environmental Protection Agency.
2. Building Radon Out. A Step-by-Step Guide On How To Build Radon-Resistant Homes. (April 2001). United States Environmental Protection Agency.
3. Test Report No 124031/2018, Radon diffusion coefficient of the polyurethane foam insulation HEATLOK HFO in accordance with the method K124/02/95.
4. 2015 International Residential Code, Appendix F.