

# RADON PROTECTION

HEATLOK SOYA HFO IS CERTIFIED AS A RADON PROTECTION SYSTEM FOR AN UNDER SLAB APPLICATION (CCMC 14280-R)\*. ITS COMPRESSIVE STRENGTH MAKES IT SUITABLE FOR DIRECT APPLICATION UNDER A CONCRETE SLAB WITHOUT DAMAGE OR DETERIORATION.

IN ONE APPLICATION, IT'S POSSIBLE TO INSULATE A COMPLETE BASEMENT FROM THE BASEMENT SLAB UP TO THE RIM JOIST, PROVIDING A TIME AND COST EFFICIENT RADON PROTECTION SOLUTION.

HEATLOK SOYA HFO CREATES A PERFECTLY SEAMLESS INSULATION AND SEALING SYSTEM, WHICH ELIMINATES ALL GAPS AND JUNCTIONS IN A RADON PROTECTION SYSTEM COMPARED TO RIGID PANELS WITH A POLYETHYLENE MEMBRANE, TAPE AND CAULKING.

HEATLOK SOYA HFO'S RADON PROTECTION SYSTEM CAN BE USED IN RESIDENTIAL AND COMMERCIAL APPLICATIONS, AS WELL AS IN RETROFIT BUILDINGS.

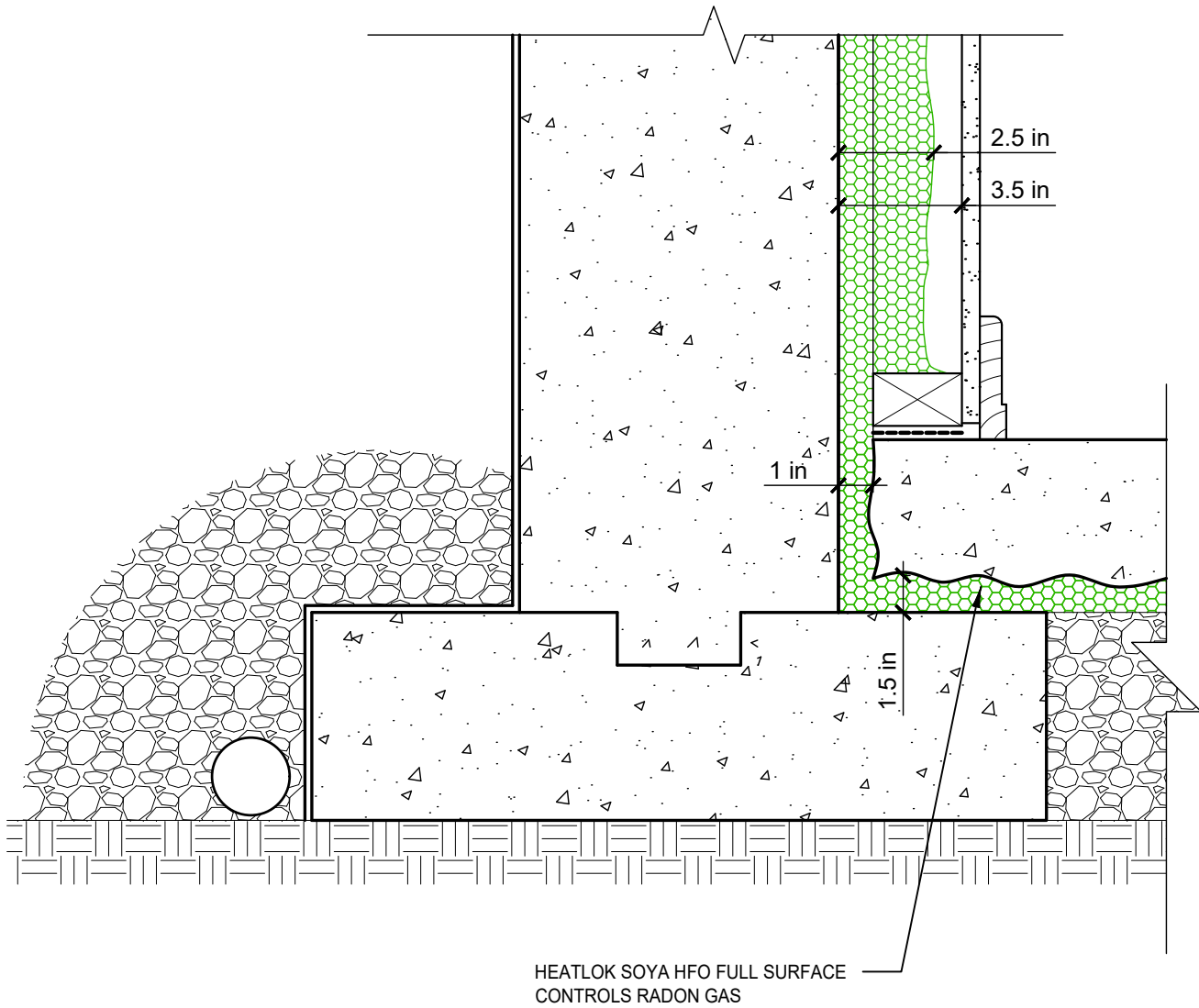
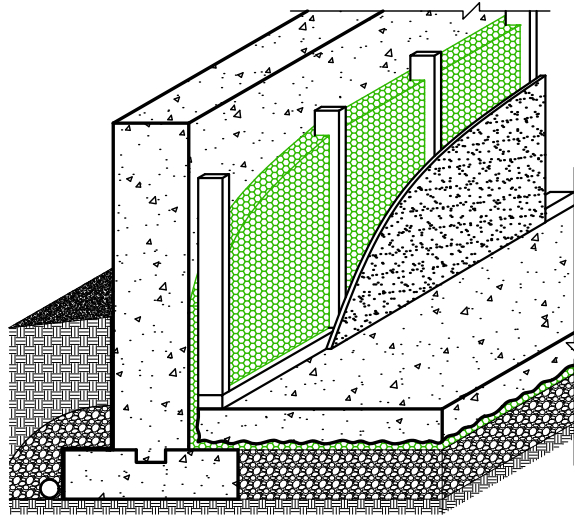
*\*see the CCMC 14280-R report for the tested assembly*

## TABLE OF CONTENTS

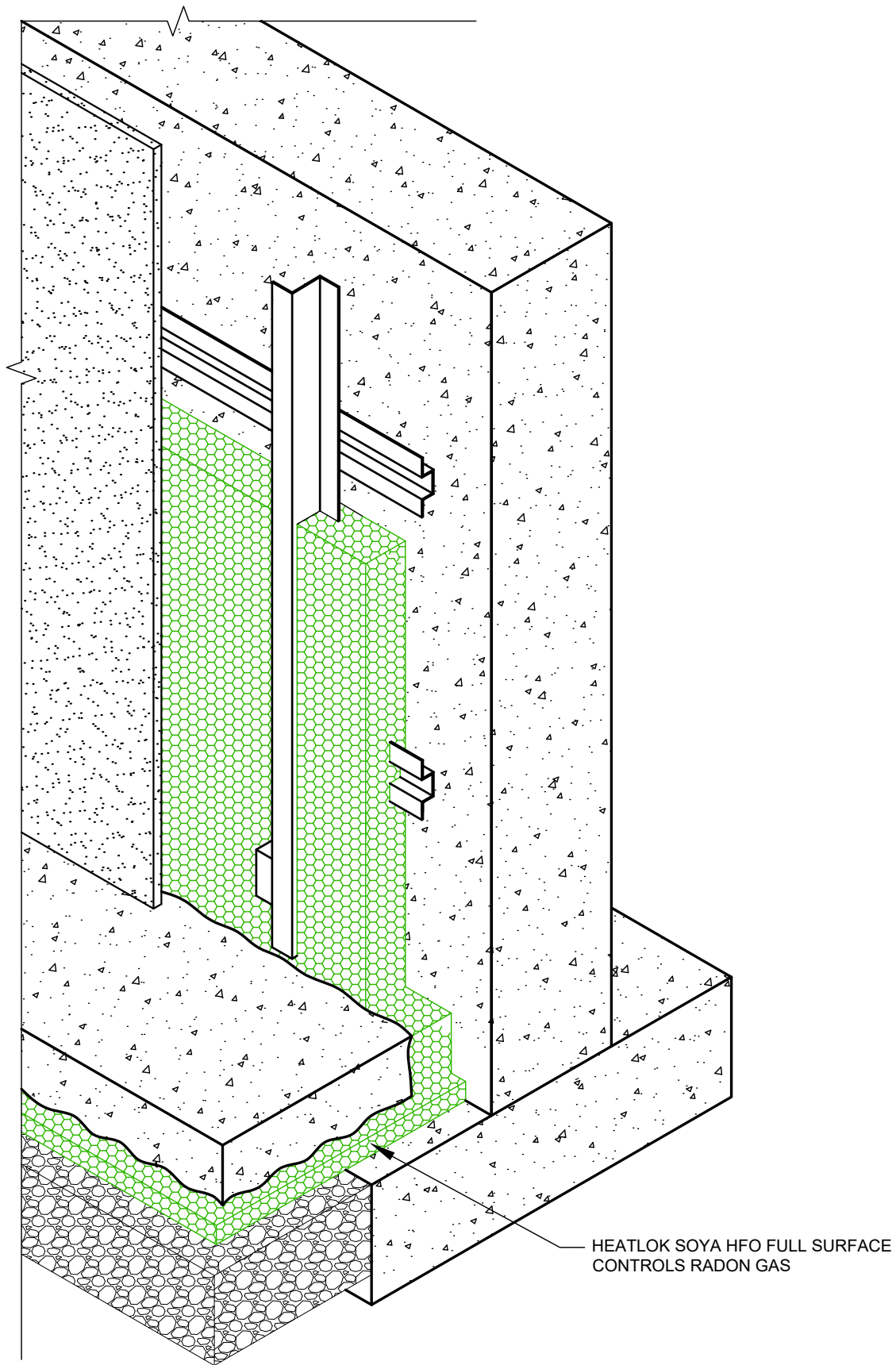
### RESIDENTIAL APPLICATION

BASEMENT SLAB:	PAGES 2, 3
SLAB ON GRADE:	PAGES 4, 5, 6
PERFORATED PIPE:	PAGE 7
BASEMENT RETROFIT:	PAGE 8

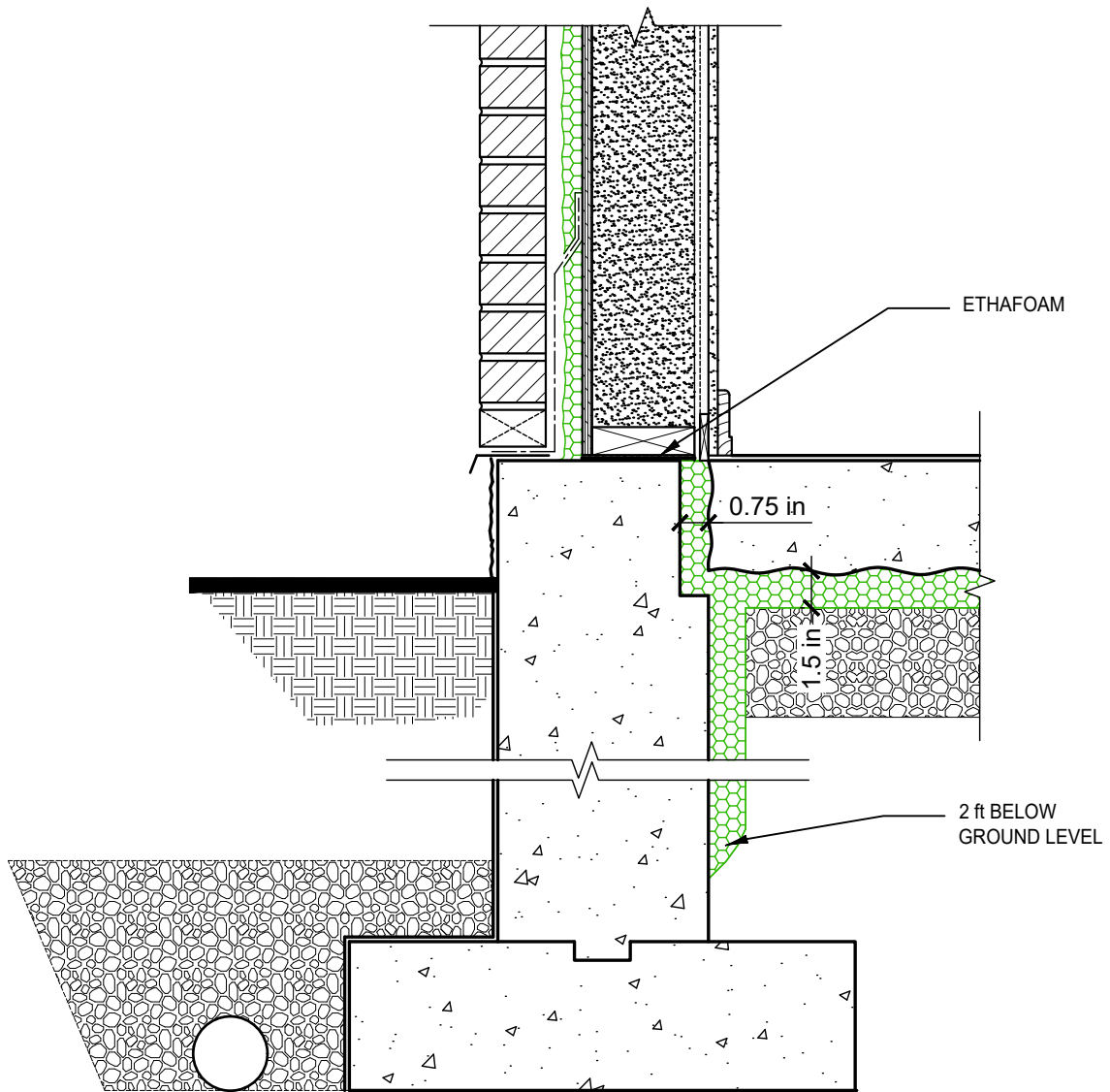
COMMERCIAL APPLICATION: PAGE 9



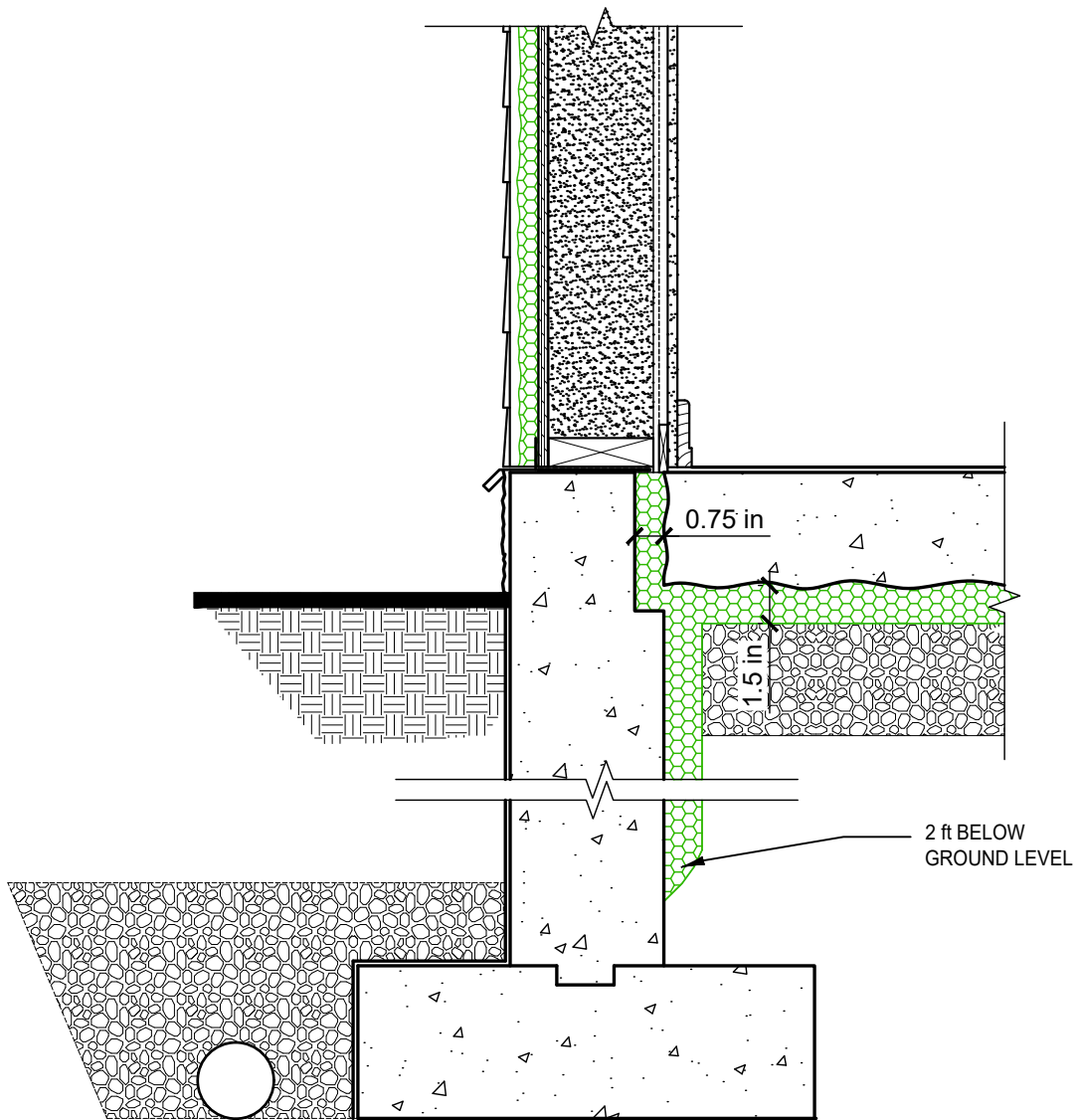
TYPICAL DETAIL - 1.5 in UNDER SLAB  
RESIDENTIAL APPLICATION



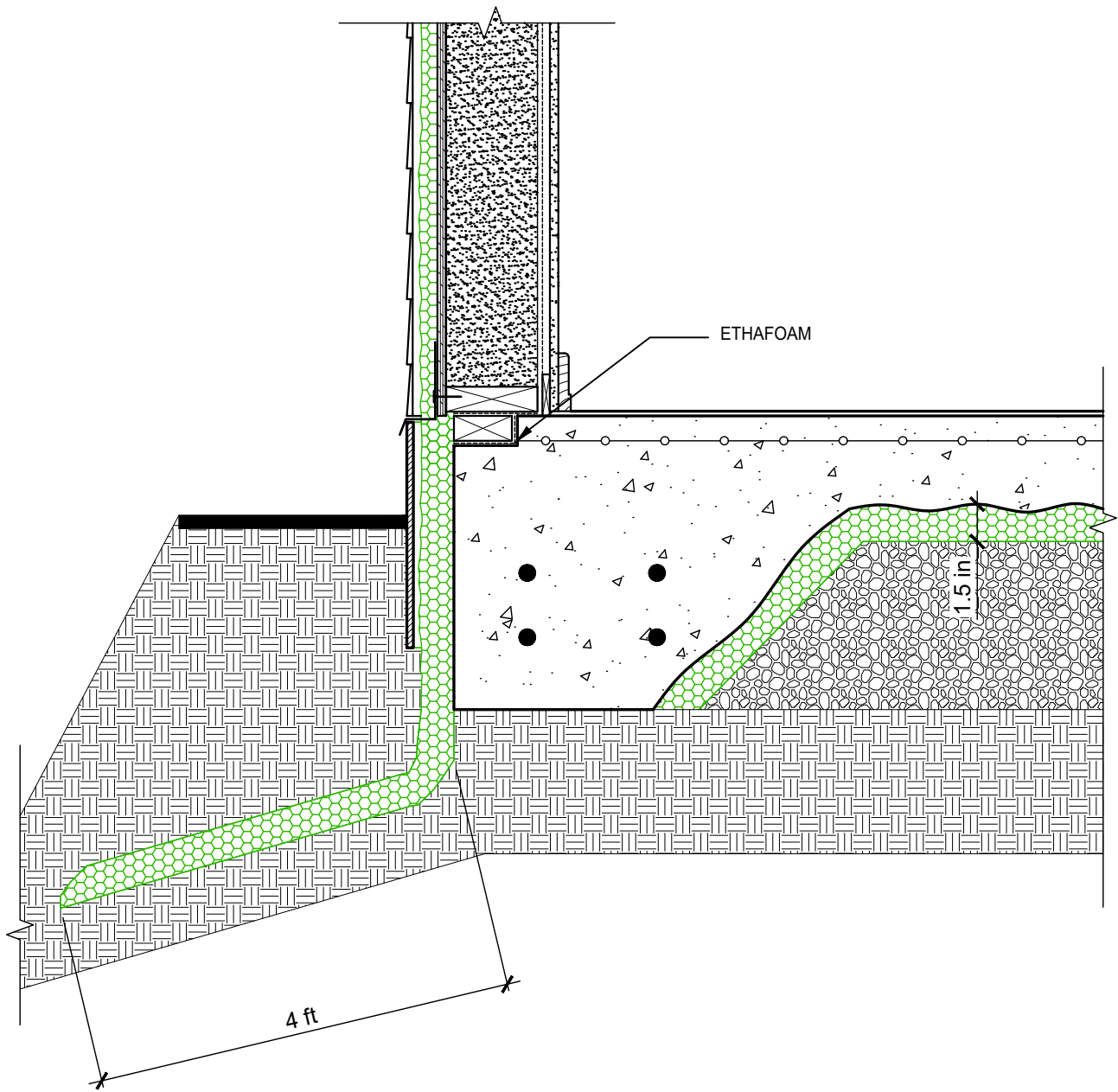
ISOMETRY - 1.5 in UNDER SLAB  
RESIDENTIAL APPLICATION



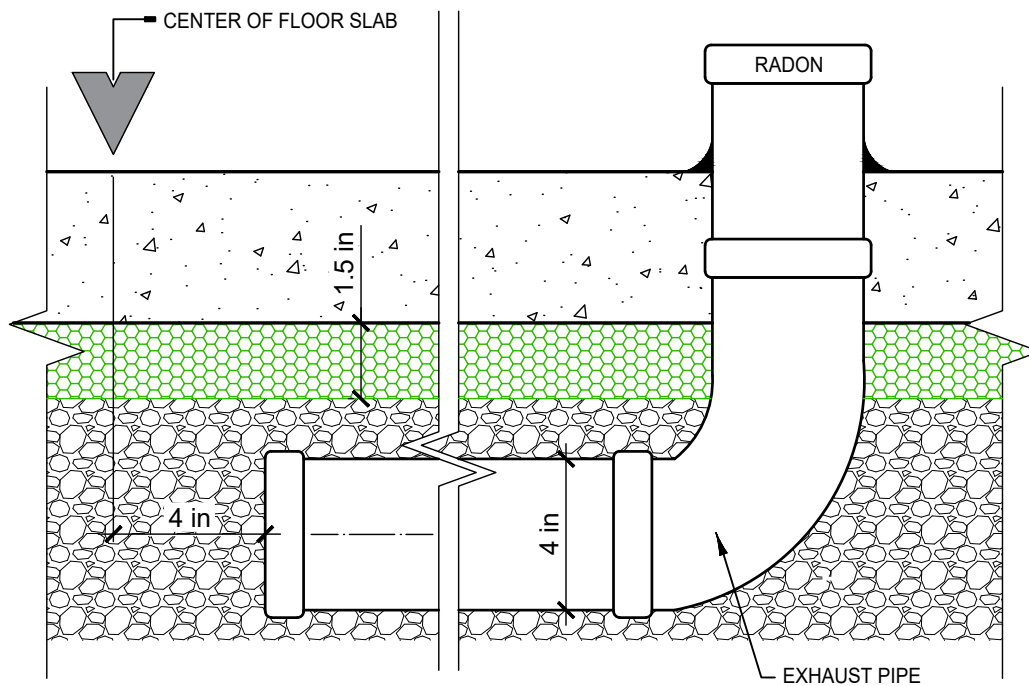
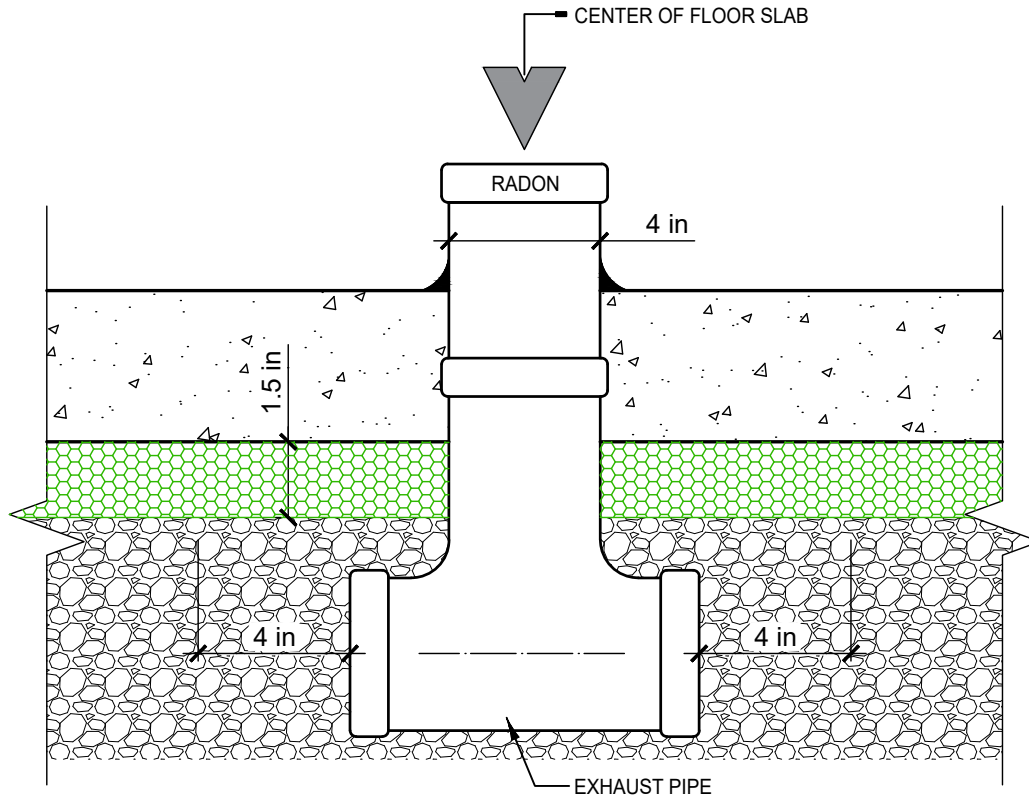
TYPICAL DETAIL - SLAB ON GRADE  
RESIDENTIAL APPLICATION



TYPICAL DETAIL - SLAB ON GRADE  
RESIDENTIAL APPLICATION

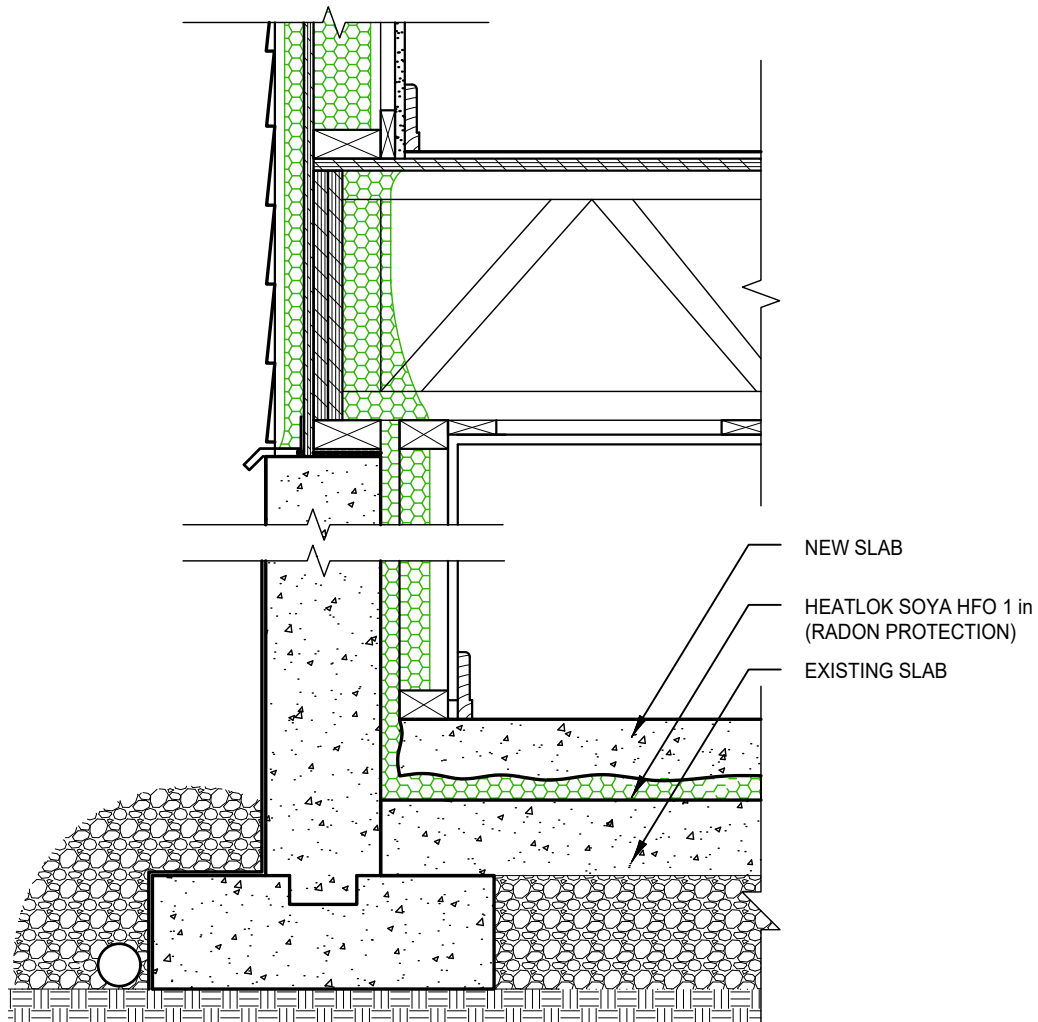
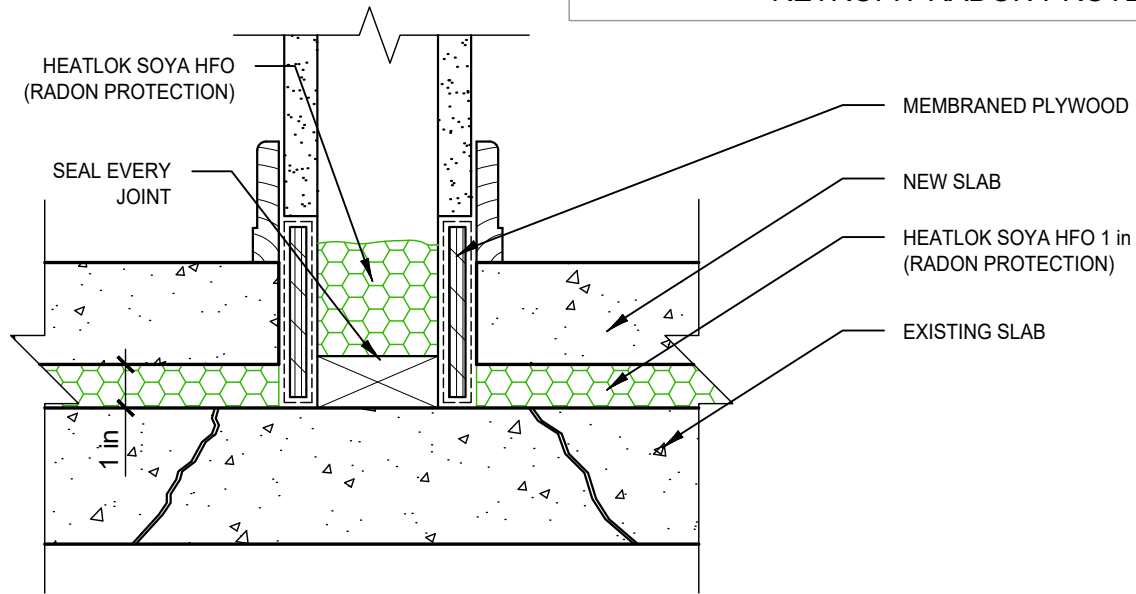


TYPICAL DETAIL - SLAB ON GRADE  
RESIDENTIAL APPLICATION



PERFORATED PIPE IN THE GRAVEL UNDER THE SLAB  
RESIDENTIAL APPLICATION

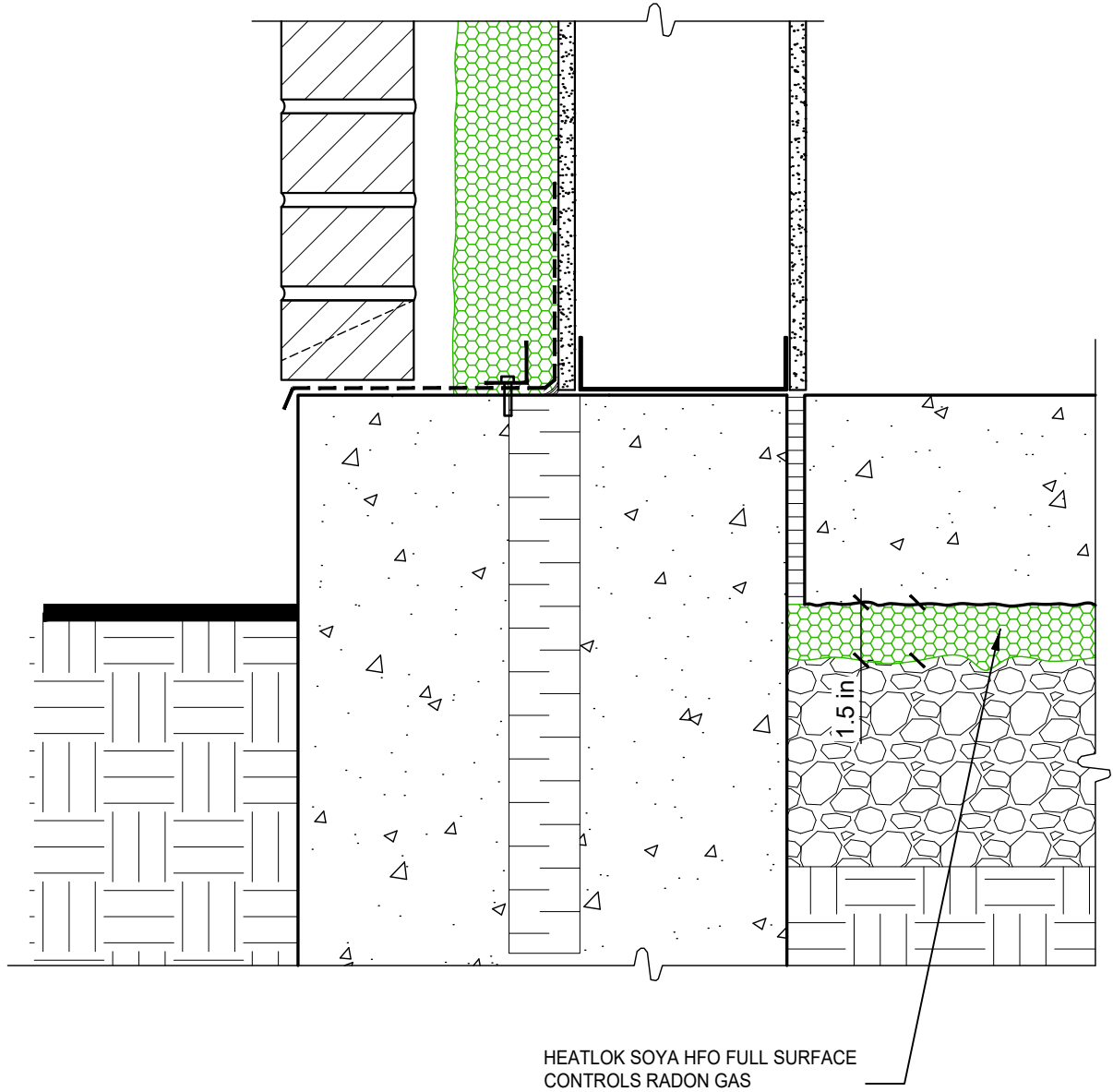




TYPICAL DETAIL - 1 in ON EXISTING SLAB  
RESIDENTIAL APPLICATION

CCMC REPORT DOES NOT INCLUDE RETROFIT CONDITIONS





TYPICAL DETAIL - 1.5 in UNDER SLAB  
COMMERCIAL APPLICATION