

# ICC-ES Evaluation Report

**ESR-5499**

Issued May 2024

Revised November 2024

Subject to renewal May 2025


This report also contains:

- [FL Supplement](#)

- [SI Supplement](#)

ICC-ES Evaluation Reports are not to be construed as representing aesthetics or any other attributes not specifically addressed, nor are they to be construed as an endorsement of the subject of the report or a recommendation for its use. There is no warranty by ICC Evaluation Service, LLC, express or implied, as to any finding or other matter in this report, or as to any product covered by the report.

Copyright © 2024 ICC Evaluation Service, LLC. All rights reserved.

<p><b>DIVISION: 07 00 00 — THERMAL AND MOISTURE PROTECTION</b></p> <p><b>Section: 07 21 00 — Thermal Insulation</b></p>	<p><b>REPORT HOLDER:</b></p> <p><b>HUNTSMAN BUILDING SOLUTIONS</b></p>	<p><b>EVALUATION SUBJECT:</b></p> <p><b>ICYNENE OC NO-MIX SPRAY FOAM INSULATION</b></p>	
---	--	---	---

## 1.0 EVALUATION SCOPE

### 1.1 Compliance with the following codes:

- 2021, 2018, 2015, 2012 and 2009 [International Building Code® \(IBC\)](#)
- 2021, 2018, 2015, 2012 and 2009 [International Residential Code® \(IRC\)](#)
- 2021, 2018, 2015, 2012 and 2009 [International Energy Conservation Code® \(IECC\)](#)
- 2013 *Abu Dhabi International Building Code (ADIBC)*<sup>†</sup>

<sup>†</sup>The ADIBC is based on the 2009 IBC. 2009 IBC code sections referenced in this report are the same sections in the ADIBC.

- Other Codes (see Section 8.0)

### Properties evaluated:

- Surface-burning characteristics
- Physical properties
- Thermal resistance (*R*-values)
- Air permeability
- Attic and crawl space installation
- Fire-resistance-rated construction

### 1.2 Evaluation to the following green standard:

- 2008 [ICC 700 National Green Building Standard™](#) (ICC 700-2008)

### Attribute verified:

- See Section 2.0

## 2.0 USES

Icynene OC No-Mix spray foam insulation is used as a nonstructural thermal insulating material in buildings of Type V construction under the IBC and dwellings under the IRC. The insulation is for use in wall cavities, floor assemblies or ceiling assemblies and in attic and crawl space applications as described in Section 4.4. Icynene OC No-Mix spray foam insulation may be used as an air-impermeable insulation. Icynene OC No-Mix may also be used in fire-resistance-rated wall assemblies when constructed in accordance with Section 4.5 of this report.

The attributes of the insulation have been verified as conforming to the provisions of ICC 700-2008 Section 703.2.1.1.1(c) as an air impermeable insulation. Note that decisions on compliance for those areas rest with the user of this report. The user is advised of the project-specific provisions that may be contingent upon meeting specific conditions, and the verification of those conditions is outside the scope of this report. These codes or standards often provide supplemental information as guidance.

## 3.0 DESCRIPTION

### 3.1 Icynene OC No-Mix:

Icynene OC No-Mix spray foam insulation is a low-density, cellular polyurethane foam plastic that is installed as a nonstructural component of floor/ceiling and wall assemblies. The material is a two-component, open-cell, one-to-one-by-volume spray foam with a nominal density of 0.5 pcf. The polyurethane foam is produced in the field by combining an isocyanate “A” component and a polymeric resin “B” component. The components have a shelf life of six months when stored in factory-sealed containers at temperatures between 50°F and 80°F (10°C and 27°C). The insulation liquid components are supplied in nominally 55-gallon drums.

### 3.2 Surface-burning Characteristics:

The insulation at a maximum thickness of 5.6 inches (142 mm) and a nominal density of 0.5 pcf, has a flame-spread index of 25 or less and smoke-developed index of 450 or less when tested in accordance with ASTM E84.

### 3.3 Thermal Resistance (*R*-values):

The insulation has thermal resistance (*R*-values), at a mean temperature of 75°F (24°C), as shown in [Table 1](#).

### 3.4 Air Permeability:

Icynene OC No-Mix spray foam insulation at a minimum thickness of 4<sup>1</sup>/<sub>2</sub> inches (114 mm) is considered air-impermeable in accordance with 2021, 2018, 2015 and 2012 IRC Section R806.5 [2009 IRC Section R806.4], based on testing in accordance with ASTM E283.

### 3.5 DC 315 Coating:

DC 315 Coating, manufactured by International Fireproof Technology, Inc./ Paint to Protect Inc. ([ESR-3702](#)), is a water-based intumescent coating supplied in 5-gallon (19 L) pails and 55-gallon (208 L) drums and has a shelf life of twenty four months when stored in a factory-sealed container at temperatures between 50°F and 80°F (10°C and 27°C).

## 4.0 INSTALLATION

### 4.1 General:

Icynene OC No-Mix spray foam insulation must be installed in accordance with the manufacturer’s published installation instructions, the applicable code and this report. A copy of the manufacturer’s published installation instructions must be available at all times on the jobsite during installation.

### 4.2 Application:

The insulation is spray-applied on the jobsite using a volumetric positive displacement pump as identified in the Huntsman Building Solutions LLC’s application instructions. The Icynene OC No-Mix resin “B” component must be stored at temperatures between 50°F (10°C) and 80°F (27°C). The insulation is used in areas where the maximum ambient temperature is equal to or less than 180°F (82°C). The foam plastic must not be used in electrical outlet or junction boxes or in contact with water. The foam plastic must not be sprayed onto a substrate that is wet, or covered with frost or ice, loose scales, rust, oil, or grease. The insulation must be protected from the weather during and after application. The Icynene OC No-Mix insulation may be spray-applied in one pass up to the maximum thicknesses specified in Section 4.3.

### 4.3 Thermal Barrier:

**4.3.1 Application with a Prescriptive Thermal Barrier:** The Icynene OC No-Mix spray foam insulation must be separated from the interior of the building by an approved thermal barrier of 1/2-inch-thick (12.7 mm) gypsum wallboard or an equivalent 15-minute thermal barrier complying with, and installed in accordance with, IBC Section 2603.4 or IRC Section R316.4, as applicable. Thicknesses of up to 12 inches (305 mm) for ceiling cavities and 12 inches (305 mm) for wall cavities are recognized based on room corner fire testing in accordance with NFPA 286, when the insulation is covered with minimum 1/2-inch-thick (12.7 mm) gypsum wallboard or an equivalent 15-minute thermal barrier complying with, and installed in accordance with, the applicable code.

**4.3.2 Application without a Prescriptive Thermal Barrier:** The prescriptive 15-minute thermal barrier may be omitted when installation is in accordance with this section. The insulation and DC 315 Coating, described in Section 3.5 and recognized in [ESR-3702](#), may be spray-applied to the interior facing of walls, the underside

of roof sheathing, and in crawl spaces, and may be left exposed as an interior finish without the prescribed 15-minute thermal barrier. The thickness of the foam applied to the underside of roof sheathing must not exceed 11<sup>1</sup>/<sub>4</sub> inches (286 mm). The thickness of the foam applied to vertical wall surfaces must not exceed 5<sup>1</sup>/<sub>4</sub> inches (133 mm). The foam plastic must be covered on all exposed surfaces with the DC 315 Coating at a minimum wet film thickness of 20-mil (0.51 mm) [dry film thickness of 13 mils (0.33 mm) or 1 gallon (3.8 L) per 80 square feet (7.4 m<sup>2</sup>)]. The DC 315 Coating must be applied over the Icynene OC No-Mix insulation in accordance with the coating manufacturer's instructions, [ESR-3702](#) and this report. Surfaces to be coated must be dry, clean, and free of dirt, loose debris and any other substances that could interfere with adhesion of the coating.

#### 4.4 Use in Attics and Crawl Spaces:

**4.4.1 Application with a Prescriptive Ignition Barrier:** When the spray-applied insulation is installed within attics and crawl spaces, where entry is made only to service utilities, an ignition barrier must be installed in accordance with IBC Section 2603.4.1.6 or IRC Sections R316.5.3 and R316.5.4, as applicable. The ignition barrier must be consistent with the requirements for the type of construction required by the applicable code and must be installed in a manner so that the foam plastic insulation is not exposed.

**4.4.2 Application without a Prescriptive Ignition Barrier:** Icynene OC No-Mix spray-applied polyurethane foam insulation may be installed in attics and crawl spaces as described in Sections 4.4.2 and 4.4.3 without the ignition barriers described in IBC Section 2603.4.1.6 and IRC Sections R316.5.3 and R316.5.4, subject to the following conditions:

- a. Entry to the attic or crawl space is only to service utilities, and no storage is permitted.
- b. There are no interconnected attic or crawl space areas.
- c. Air in the attic or crawl space is not circulated to other parts of the building.
- d. Attic ventilation is provided when required by 2021 and 2018 IBC Section 1202.2 [2015, 2012 and 2009 IBC Section 1203.2] or IRC Section R806, as applicable, except when air-impermeable insulation is permitted in unvented attics in accordance with 2021 and 2018 IBC Section 1202.3 [2015 IBC Section 1203.3] or 2021, 2018, 2015 and 2012 IBC Section R806.5 [2009 IRC Section R806.4], as applicable. Under-floor (crawl space) ventilation is provided when required by 2021 and 2018 IBC Section 1202.4 [2015, 2012 and 2009 IBC Section 1203.3] or IRC Section R408.1, as applicable.
- e. Combustion air is provided in accordance with IMC (*International Mechanical Code*) Section 701.
- f. If hot work is to be performed, all necessary procedures, precautions and limitations must be observed in accordance with OSHA 1926 Subpart J Standard 1926.352 requirements for hot work (welding / cutting) performed in the vicinity of combustible materials.
- g. An installation certificate with the following information must be posted at each entrance:
  - Product name and installation thickness.
  - Manufacturer name, address and contact information.
  - Installation contractor name, address and contact information.
  - Attestation that the product(s) have been installed in accordance with the manufacturer's installation instructions and the requirements of the evaluation report.
  - A notice that the certificate is not to be removed or altered.
  - A list of limitations for the space including the following:
    - o Entry to the space is only to service utilities, and no storage is permitted.
    - o FIRE SAFETY WARNING: If hot work is to be performed, all necessary procedures, precautions and limitations must be observed in accordance with OSHA 1926 Subpart J Standard 1926.352 requirements for hot work (welding / cutting) performed in the vicinity of combustible materials.

In attics, the insulation may be spray-applied to the underside of roof sheathing or roof rafters, and/or to vertical surfaces; and in crawl spaces, the insulation may be spray-applied to the underside of floors and/or vertical surfaces. The thickness of the foam plastic, applied to the underside of the top of the space, must not exceed 11<sup>1</sup>/<sub>2</sub> inches (292 mm). The thickness of the foam plastic applied to vertical surfaces must not exceed 5<sup>1</sup>/<sub>2</sub> inches (140 mm). The foam plastic must be covered on all exposed surfaces with the DC 315 coating, described in Section 3.5, at a minimum wet film thickness of 4 mils (0.10 mm) (dry film thickness of 3 mils (0.08 mm) or 1 gallon (3.8 L) per 400 square feet (37.1 m<sup>2</sup>)). The DC 315 coating must be applied over the Icynene OC No-Mix insulation in accordance with the coating manufacturer's instructions and this report. Surfaces to be coated must be dry, clean, and free of dirt, loose debris and any other substances that could interfere with adhesion of the coating. The coating must be applied when ambient and substrate temperatures

are a minimum of 50°F time. The assembly described in this section may be installed in unvented attics in accordance with 2021 and 2018 IBC Section 1202.3 [2015 IBC Section 1203.3] or 2021, 2018, 2015 and 2012 IRC Section R806.5 [2009 IRC Section R806.4], as applicable, when the foam plastic is applied to a minimum depth of 4<sup>1</sup>/<sub>2</sub> inches (114 mm).

**4.4.3 Use on Attic Floors:** Icynene OC No-Mix spray-applied polyurethane foam insulation may be installed at a maximum thickness of 5<sup>1</sup>/<sub>2</sub> inches (140 mm) between the joists in an attic floor. The insulation must be covered with DC 315 coating applied as described in Section 4.4.2. The insulation must be separated from the interior of the building by an approved thermal barrier.

**4.5 One-hour Fire-resistance-rated Exterior Wall Assemblies (Non-load-bearing):**

Icynene OC No-Mix insulation may be used as a component of one-hour fire-resistance-rated, non-load-bearing wall assemblies as described in Section 4.5.1 or 4.5.2.

**4.5.1 One-hour Wood-framed Wall Assembly:**

**4.5.1.1 Interior and Exterior Face:** One layer of 5/8-inch-thick (15.9 mm), Type X gypsum board, complying with ASTM C36 or ASTM C1396, installed with the long edge parallel to the studs on both sides of nominal 2-inch by 6-inch wood, No. 2 Grade, Southern Yellow Pine, studs spaced 16 inches (406 mm) on center. The gypsum board is secured with 1<sup>1</sup>/<sub>4</sub>-inch-long (32 mm) Type W drywall screws spaced 8 inches (203 mm) on center along the perimeter and in the field. Gypsum board joints must be taped, and joints and fastener heads treated with joint compound to Level 2 finish in accordance with ASTM C840 or GA-216.

**4.5.1.2 Stud Cavity:** Nominally 5<sup>1</sup>/<sub>2</sub>-inch-thick Icynene OC No-Mix foam insulation is spray-applied in all stud cavities.

**4.5.2 One-hour Steel-framed Wall Assembly:**

**4.5.2.1 Interior and Exterior Face:** Two layers of 5/8-inch-thick (15.9 mm), Type X gypsum board, complying with ASTM C36 or ASTM C1396, is installed on both sides of 3<sup>5</sup>/<sub>8</sub>-inch-deep (92 mm), No. 20 gage, galvanized steel studs spaced 24 inches (610 mm) on center. The base layer of the gypsum board is installed with the long edge parallel to the studs and secured with No. 6 by 1<sup>1</sup>/<sub>4</sub>-inch-long (32 mm), self-drilling drywall screws 8 inches (203 mm) on center along the perimeter and 12 inches (305 mm) on center in the field of the wallboard. The face layer of the wallboard is secured with No. 6 by 1<sup>7</sup>/<sub>8</sub>-inch-long (48 mm), self-drilling drywall screws 8 inches (203 mm) on center along the perimeter and in the field of the wallboard. The joints must be staggered from the base layer the face layer and from interior to exterior face of the assembly. Gypsum board joints must be taped, and joints and fastener heads treated with joint compound to Level 2 finish in accordance with ASTM C840 or GA-216.

**4.5.3 Stud Cavity:** Nominally 3<sup>5</sup>/<sub>8</sub>-inch-thick Icynene OC No-Mix foam insulation is spray-applied in all stud cavities.

## 5.0 CONDITIONS OF USE:

The Icynene OC No-Mix spray foam insulation described in this report complies with, or is a suitable alternative to what is specified in, those codes listed in Section 1.0 of this report, subject to the following conditions:

- 5.1 This evaluation report and the manufacturer's published installation instructions, when required by the code official, must be submitted at the time of permit application.
- 5.2 The Icynene OC No-Mix spray foam insulation must be installed in accordance with the manufacturer's published installation instructions, this evaluation report and the applicable code. If there are conflicts between this report and the manufacturers' published installation instructions, this report governs.
- 5.3 The insulation must be separated from the interior of the building by an approved 15-minute thermal barrier, except when installation is as described in Section 4.3.2 or 4.4.2.
- 5.4 The insulation must not exceed the nominal density and thicknesses noted in Sections 3.2, 4.3, 4.4, and 4.5.
- 5.5 The insulation must be protected from the weather during and after application.
- 5.6 The insulation must be applied by contractors certified by Huntsman Building Solutions, LLC.
- 5.7 Use of the insulation in areas where the probability of termite infestation is "very heavy" must be in accordance with IRC Section R318.4 or 2021, 2018, 2015 and 2009 IBC Section 2603.8 [2012 IBC Section 2603.9], as applicable.
- 5.8 The insulation has been evaluated only for use in Type V construction under the IBC and in dwellings under the IRC.
- 5.9 Jobsite certification and labeling of the insulation must comply with 2021, 2018 or 2015 IRC Sections N1101.10.1 and N1101.10.1.1 [2012 IRC Sections N1101.12.1 and N1101.12.1.1 or 2009 IRC Sections

N1101.4 and N1101.4.1] and 2021, 2018, 2015 and 2012 IECC Sections C303.1.1, C303.1.1.1, R303.1.1 and R303.1.1.1 [2009 IECC Sections 303.1.1 and 303.1.1.1.], as applicable.

- 5.10** When installed in accordance with Section 4.4.2 of this report, the associated installation certificate(s) containing the required information referenced in Section 4.4.2 must be installed at each entrance to the crawlspace or attic, as applicable. The certificate(s) must be red in color and constructed of durable materials, such as metal, plastic, or laminated paper.
- 5.11** When used in unvented attics in accordance with Section 4.4.2 of this report, installation with a vapor diffusion port in accordance with 2021 IBC Section 1202.3, Item 5.2 or 2021 and 2018 IRC Section R806.5, Item 5.2 is outside the scope of this report.
- 5.12** A vapor retarder must be installed as required by the applicable code.
- 5.13** The components of the insulation are produced in Houston, Texas, under a quality control program with inspections by ICC-ES.

## 6.0 EVIDENCE SUBMITTED

- 6.1** Data in accordance with the [ICC-ES Acceptance Criteria for Spray-applied Foam Plastic Insulation \(AC377\)](#), dated June 2023, including tests in accordance with Appendix X of AC377.
- 6.2** Reports of air leakage tests in accordance with ASTM E283.
- 6.3** Reports of room corner fire testing in accordance with NFPA 286.
- 6.4** Reports of testing in accordance with ASTM E970.
- 6.5** Reports of testing in accordance with ASTM E119.

## 7.0 IDENTIFICATION

- 7.1** Components for Icynene OC No-Mix spray foam insulation are identified with the manufacturer's name (Huntsman Building Solutions), address and telephone number; the product name (Icynene OC No-Mix); mixing instructions; the density; the flame-spread and smoke-development indices; the shelf life and production date or the expiration date; and the evaluation report number ([ESR-5499](#)).

International Fireproof Technology, Inc. / Paint to Protect Inc., DC 315 coating is labeled with the manufacturer's name and address; the product name; the date of manufacture, the shelf life or expiration date; the manufacturer's instructions for application, and evaluation report number ([ESR-3702](#)).

- 7.2** The report holder's contact information is the following:

**HUNTSMAN BUILDING SOLUTIONS**  
**3315 EAST DIVISION STREET**  
**ARLINGTON, TEXAS 76011**  
**(817) 640-4900**  
[www.huntsmanbuildingsolutions.com](http://www.huntsmanbuildingsolutions.com)

## 8.0 OTHER CODES

In addition to the codes referenced in Section 1.0, the products described in this report were evaluated for compliance with the requirements of the following codes:

- 2006 *International Building Code*® (2006 IBC)
- 2006 *International Residential Code*® (2006 IRC)
- 2006 *International Energy Conservation Code*® (2006 IECC)

The products comply with the above-mentioned codes as described in Sections 2.0 through 7.0 of this report, with the revisions noted below:

- **Application with a Prescriptive Thermal Barrier:** See Section 4.3.1, except the approved thermal barrier must be installed in accordance with Section R314.4 of the 2006 IRC.
- **Application with a Prescriptive Ignition Barrier:** See Section 4.4.1 except attics must be vented in accordance with Section 1203.2 of the 2006 IBC, and crawl space ventilation must be in accordance with Section 1203.3 of the 2006 IBC or 2006 IRC Section R408, as applicable. Additionally, an ignition barrier must be installed in accordance with Sections R314.5.3 or R314.5.4 of the 2006 IRC, as applicable.
- **Application without a Prescriptive Ignition Barrier:** See Section 4.4.2, except attics must be vented in accordance with Section 1203.2 of the 2006 IBC, and crawl space ventilation must be in accordance with

Section 1203.3 of the 2006 IBC or 2006 IRC Section R408, as applicable. Combustion air is provided in accordance with Sections 701 and 703 of the 2006 IECC.

- **Protection against Termites:** See Section 5.7, except use of the insulation in areas where the probability of termite infestation is “very heavy”, must be in accordance with Section R320.5 of the 2006 IRC.
- **Jobsite Certification and Labeling:** See Section 5.9, except jobsite certification and labeling must comply with Sections 102.1.1 and 102.1.11, as applicable, of the 2006 IECC.

**TABLE 1—THERMAL RESISTANCE (R-VALUES)**

THICKNESS (inches)	R-VALUE (°F.ft <sup>2</sup> .h/Btu)
1	3.8
2	7.6
3	11
3.5	13
4	15
5	18
6	22
7	26
8	29
9	33
10	37
11	40
12	44

For **SI**: 1 inch = 25.4 mm; 1°F.ft<sup>2</sup>.h/Btu = 0.176 110°K.m<sup>2</sup>/W.  
<sup>1</sup>R-values are calculated based on tested K-values at 1- and 4-inch thicknesses.

DIVISION: 07 00 00—THERMAL AND MOISTURE PROTECTION

Section: 07 21 00—Thermal Insulation

REPORT HOLDER:

HUNTSMAN BUILDING SOLUTIONS

EVALUATION SUBJECT:

ICYNENE OC NO-MIX SPRAY FOAM INSULATION

## 1.0 REPORT PURPOSE AND SCOPE

### Purpose:

The purpose of this evaluation report supplement is to indicate that Icynene OC No-Mix spray foam insulation, described in ICC-ES evaluation report ESR-5499, has also been evaluated for compliance with the codes noted below.

### Applicable code editions:

- 2020 Florida Building Code—Building
- 2020 Florida Building Code—Residential

## 2.0 CONCLUSIONS

The Icynene OC No-Mix spray foam insulation, described in Sections 2.0 through 7.0 of the evaluation report ESR-5499, complies with the *Florida Building Code—Building* and the *Florida Building Code—Residential*, provided the design and installation are in accordance with the 2018 *International Building Code*® provisions noted in the evaluation report under the following condition:

Installation must meet the requirements of Sections 1403.8 and 2603.8 of the *Florida Building Code – Building* and Sections R318.7 and R318.8 of the *Florida Building Code – Residential*, as applicable.

Use of the Icynene OC No-Mix spray foam insulation for compliance with the High-Velocity Hurricane Zone provisions of the *Florida Building Code—Building* and the *Florida Building Code—Residential* has not been evaluated, and is outside the scope of this evaluation report.

For products falling under Florida Rule 61G20-3, verification that the report holder's quality assurance program is audited by a quality assurance entity approved by the Florida Building Commission for the type of inspections being conducted is the responsibility of an approved validation entity (or the code official when the report holder does not possess an approval by the Commission).

This supplement expires concurrently with the evaluation report, issued May 2024 and revised November 2024.

DIVISION: 07 00 00—THERMAL AND MOISTURE PROTECTION  
Section: 07 21 00—Thermal Insulation

**REPORT HOLDER:**

HUNTSMAN BUILDING SOLUTIONS, LLC

**EVALUATION SUBJECT:**

ICYNENE OC NO-MIX SPRAY FOAM INSULATION

**1.0 EVALUATION SCOPE****Conformance to the following:**

Seal and Insulate with ENERGY STAR Program, *Definitions and Testing Requirements for Residential Insulation, Version 1.0*

**Properties evaluated:**

- Thermal resistance
- Surface-burning characteristics

**2.0 PURPOSE OF THIS SUPPLEMENT**

This supplement is issued to certify that the Icynene OC No-Mix Spray Foam Insulation described in Sections 2.0 through 8.0 of the evaluation report (ESR-5499) have been reviewed for compliance with the applicable codes noted in Section 1.0 of the evaluation report and with the requirements set forth in the Seal and Insulate with ENERGY STAR Program, *Definitions and Testing Requirements for Residential Insulation, Version 1.0*. The insulation product covered by this supplement is defined as “Spray Foam Insulation.”

The requirements for testing laboratory qualifications and product sampling, as well as the specific material and test standards and editions used in this evaluation, are as set forth in the applicable documentation noted in Section 6.0 of the evaluation report.

ICC-ES, the Certification Body, has verified that the test results were issued by laboratories accredited as required by the Conditions and Criteria for Recognition of Insulation Certification Bodies for the ENERGY STAR Program.

**3.0 DEFINITIONS**

The following definitions are from the Definitions and Testing Requirements for Residential Insulation, Version 1.0, and are applicable to the subject of this report.

**3.1 General Definition:**

**Insulation:** Any material mainly used to slow down heat flow. It may be mineral or organic, fibrous, cellular, or reflective (aluminum foil). It may be in rigid, semi-rigid, flexible, or loose-fill form.

**Residential Buildings:** Single family homes (attached or unattached), multifamily buildings with 4 units or fewer, or multifamily buildings (e.g., condominiums and apartments) with 3 stories or less in height above grade.

**3.2 Insulation Product Definition:**

**Spray or Pour Foam Insulation:** A thermal insulating material that is sprayed or poured (as a gel or foamy liquid) into place and expands or sets into a cellular foam and cures at the point of installation through a chemical reaction. Foamed materials include, but are not limited to polyurethane, polyisocyanurate, phenolic, and cementitious insulation.



### 3.3 Insulation Performance Definitions:

**R-value:** The inverse of the time rate of heat flow through a body from one of its bounding surfaces to the other surface for a unit temperature difference between the two surfaces, under steady state conditions, per unit area. For the purposes of the Seal and Insulate with ENERGY STAR program, only Imperial units will be accepted [(h·ft<sup>2</sup>·°F)/Btu].

**Smoke-Development Index:** The characteristic of a material to emit smoke when exposed to flame or fire compared to heptane and inorganic cement.

**Flame-Spread Index:** The characteristic of a material to resist the spreading of flames when exposed to flame or fire compared to red oak and inorganic cement.

### 4.0 Insulation Performance:

#### 4.1 Thermal Resistance:

Icynene OC No-Mix Spray Foam has the thermal resistance *R*-values as noted in Table 1 of ESR-5499, based upon testing.

#### 4.2 Surface Burning Characteristics:

**Smoke-Development Index:** See Section 3.2 of ESR-5499 for the smoke-development index of the insulation material.

**Flame-Spread Index:** See Section 3.2 of ESR-5499 for the flame-spread index of the insulation material.

### 5.0 Installation:

Installation of Icynene OC No-Mix Spray Foam must be in accordance with the requirements set forth in Sections 4.0 and 5.0 (as applicable) of ESR-5499 and Huntsman Building Solution's Installation Instructions dated October 8, 2024, which are reprinted on pages 11 through 31. The installation instructions address use in the following locations of the residence:

- Above grade wall (inside)
- Above grade wall (outside)
- Below grade wall (inside)
- Crawlspace wall (under house)
- Roof or rafters (cathedral ceiling)
- Attic floor
- Attic knee wall
- Ceiling of basement or crawlspace

This supplement expires concurrently with the evaluation report, issued May 2024 and revised November 2024.



# RESIDENTIAL SPRAY FOAM PRODUCT APPLICATION GUIDE FOR HOMEOWNERS

## OVERVIEW OF HEALTH AND SAFETY FACTORS TO TAKE INTO ACCOUNT WHEN USING SPRAY POLYURETHANE FOAM (SPF)

This application guide pertains to the spray polyurethane foam insulation products offered by Huntsman Building Solutions for residential use. It serves as a general reference for homeowners. Contractors are advised to consult the complete Application Guides for each specific product to obtain detailed installation parameters and requirements. When applying SPF, it is essential to prioritize health and safety. The subsequent sections address potential hazards associated with SPF application, the proper handling of chemical components, safety practices on the job site, and the necessary personal protective equipment for handling and installing SPF chemicals. This information is derived from the Center for Polyurethane Industries' Guidance on Best Practices for the Installation of Spray Polyurethane Foam, which can be accessed at <https://www.americanchemistry.com>. For more extensive information regarding the health and safety considerations of SPF, additional resources, guidance documents, and training materials are available at [www.spraypolyurethane.org](http://www.spraypolyurethane.org).

## QUALITY ASSURANCE – INSTALLER QUALIFICATIONS

Only contractors authorized by Huntsman Building Solutions in the art of applying spray polyurethane foam insulation can install the products.

## OVERVIEW OF SPRAY POLYURETHANE FOAM'S COMPONENT MATERIALS HEALTH RISKS

Spray polyurethane foam insulation is created through the combination of methylene diphenyl diisocyanate (MDI) and a polyol mixture. Given that these materials may pose health risks, only contractors approved by Huntsman Building Solutions in the application of spray polyurethane foam insulation, and equipped with the appropriate personal protective equipment (PPE) as outlined below, are permitted to handle and install these products. For a visual summary of the required PPE for applicators and assistants, please refer to Figure 1. For further details regarding potential health effects, consult the Material Safety Data Sheets (MSDS) for A-PMDI and B-Side Resin provided by HBS.

## RESPIRATORY PROTECTION

In the course of application, the concentration of airborne chemicals may surpass the established exposure guidelines. Consequently, access to the work area and the handling of raw materials is restricted to trained and authorized contractors equipped with appropriate personal protective equipment (PPE). Indoor applications generally necessitate the use of Supplied Air Respirators (SAR), while outdoor applications may call for Air Purifying Respirators. For additional guidance on selecting respirators, please consult the NIOSH Respirator Decision Logic, which is accessible online at [www.cdc.gov/niosh/docs/2005-100/pdfs/05-100.pdf](http://www.cdc.gov/niosh/docs/2005-100/pdfs/05-100.pdf).

## EYE PROTECTION

It is essential to wear suitable eye protection to safeguard the eyes from accidental splashes of liquids, reactive foams, and other aerosols and particulates that may be encountered during application. When dealing with liquid SPF chemicals in open containers, workers should utilize safety goggles or a combination of safety goggles and face shields to shield their eyes. Additionally, during the application of SPF, eye protection can be enhanced by using a hooded or full-face respirator. Furthermore, having a portable eyewash station readily accessible in the rig or truck, as well as in the immediate work area, and ensuring it is properly covered, can provide additional safety.

## CLOTHING & GLOVES

Workers are required to don suitable protective attire whenever there is a risk of direct exposure to SPF component chemicals, particularly during the handling of raw materials and the application of SPF. Applicators and their assistants generally utilize disposable coveralls to prevent spray and mist from coming into contact with their skin and clothing. Fabric gloves that are completely coated with nitrile, neoprene, butyl, or PVC are usually effective in safeguarding SPF applicators. To ensure adequate skin protection, personal protective equipment (PPE) must be worn in a way that leaves no skin exposed.

## RE-ENTRY & RE-OCCUPANCY TIMES FOR INTERIOR APPLICATIONS

Only trained, approved and properly protected workers can access the work area during application and for a determined period afterwards. The work area shall be ventilated in accordance with applicable guidance, notably the US Environmental Protection Agency (EPA)'s "Ventilation Guidance for Spray Polyurethane Foam Application", the American Chemistry Council's Center for the Polyurethanes Industry's "Good Practices – Engineering Controls and Ventilation", as well as Federal Regulations for Safety and Health during Construction. Re-entry periods for sprayers, helpers, informed trade workers and contractors will vary depending on the product and ventilation rate being used. For homeowners and building occupants, Huntsman Building Solutions recommends a 24-hour re-occupancy time after the application of SPF when appropriate ventilation is used. Homeowners are encouraged to visit [www.spraypolyurethane.org](http://www.spraypolyurethane.org) and [www.huntsmanbuildingsolutions.com](http://www.huntsmanbuildingsolutions.com) for up to date information about spray foam application standards.

Figure 1 – PPE Guidance for applicators and helpers





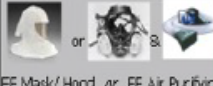
Routes of Exposure	PPE
	<b>High Pressure High Pressure Spray Systems</b> 
Eyes	 FF Mask/ Hood
Skin	<b>Full Body Suits</b>  Full Suit
Hands	<b>Gloves</b> 
Lungs	<b>Air Supply</b>  FF Mask/ Hood or FF Air Purifying Airline DV/Pre-filter Provide Good Ventilation

Figure 1 Source: Center for Polyurethane Industries' Guidance on Best Practices for the Installation of Spray Polyurethane Foam

**GENERAL PROCESSING GUIDELINE**

HBS spray polyurethane foam (SPF) insulation requires heat from the proportioner to complete the chemical reactions necessary to create foam meeting the specifications on the Technical DataSheet. Fully functional primary heaters and hose heat are needed to process the materials. Please consult the Huntsman Building Solutions Technical Service Department for further assistance.

**SUBSTRATE PREPARATION**

All surfaces to be sprayed must be free of oil, grease, waxes, rust scale, loose dirt and water. In addition, the substrate must be structurally sound. The moisture content of wood substrates must not exceed 19% before foam is applied. Some metal surfaces may require sandblasting and priming prior to foam spraying to ensure adequate adhesion. Consult a Huntsman Building Solutions Technical Service Representative for additional information on surface preparation. When in doubt about the potential for adhesion to a substrate, build a mock-up and spray the foam under similar conditions to that expected in the field, then test for adhesion and cohesion.

Applying foam insulation to concrete:

- Concrete and masonry must be fully cured and “bone-dry.”
- Oils – wash with detergent and allow to dry
- Salt or calcium deposits – wash with detergent and allow to dry
- Muriatic acid can be an effective cleaning agent for preparing concrete substrates prior to spraying foam. Follow the label instructions for dilution and application.

Applying foam insulation to galvanized steel:

- Oils or passivators – clean with solvent, wash with water based cleaner/degreaser, brush blasting may be necessary.
- Do not use hydrocarbon solvents like mineral spirits to clean galvanized metal.
- White rust – wire brushing or scrubbing with a stiff brush or abrasive pad.
- Prime using a DTM (direct to metal) bonding primer suitable for galvanized metal.

Applying foam over previously painted surface:

- Glossy surfaces – sand or abrade surfaces.

Applying foam over bare steel/metal:

- Rust scales – wire brushing or scrubbing with a stiff brush or abrasive pad.
- Corrosion – clean then prime with suitable bonding primer.
- Glossy or very smooth surfaces – sand or abrade surfaces.

Applying foam over stainless steel:

- Oils – wash with mineral spirits and then prime with a suitable primer. Brush blasting, sanding or abrading may be necessary as foam requires a mechanical bond.

Applying foam over aluminum:

- Oils, Hydrated Alumina – clean with solvent, never use a caustic solution, and prime with a high adhesion bonding primer suitable for aluminum.

Applying foam over glass:

- Oils – wash with detergent
- Glossy or very smooth surfaces – sand or abrade surfaces.
- UV degradation – prime glass surface with suitable primer.

Asphalt and Tar:

- Solvents – allow to cure and for solvent to evaporate, prime with suitable primer.

Rigid Polyurethane Foam:

- UV degradation – remove surface of foam with wire brush or wire grinding wheel.

Polypropylene, polyethylene, some silicones and some ceramic surfaces:

- Spray polyurethane foam may not adhere without a mechanical attachment to these substrates.

## FOAM APPLICATION

In preparation for spraying, workers will perform an off-target test spray to verify the processing pressure, primary heater and hose temperature settings. Foam application temperatures and pressures can vary widely depending on temperature, humidity, elevation, substrate, equipment and other factors. While processing, the applicator must continuously observe the characteristics of the sprayed foam and adjust processing temperatures and pressures to maintain proper cell structure, adhesion, cohesion and general foam quality.

Spraying sections too thick, too fast may result in charring of the foam, or in extreme conditions a fire may result. Therefore, the maximum thickness per pass and proper wait times between passes should be respected to avoid fire hazards, including spontaneous combustion, resulting from excessive heat generation. Thin foam layers often result in poor physical properties, reduced coverage and poor chemical reaction due to low exothermic heat generated from the chemical reaction, which is needed to create proper cell formation. When multiple layers are necessary to achieve the proper R-value, cross-hatching should be done. This technique aids in proper cohesion of passes.

The temperature of the substrate has a major effect on the foam density and adhesion. Certain compromises are necessary to spray in cold weather. The "COLD WEATHER PROCESSING" section offers more information on this topic. If in doubt about the substrate or the ambient conditions, a trial application should be done to check foam quality and spray performance. Water on the substrate from rain, fog, condensation, etc. will react chemically with the isocyanate, adversely affecting the physical properties, performance and adhesion of the foam. Application on substrates with high relative humidity can also adversely affect the physical properties of the foam.

## EXTERIOR FOAM APPLICATION

Climatic conditions are an important factor that should be considered when preparing to apply foam to the exterior of a structure. Ambient and substrate temperatures should be monitored. Foam should only be applied when ambient and substrate temperatures are inside the range for the foam system being used. Foam should only be applied to substrates with less than 19% moisture content. It is best to apply foam when the humidity is less than 80% and the wind is less than 10 mph to maintain proper adhesion. Pay close attention to the temperature of the substrate when applying foam to the exterior of a structure.

Use windscreens downwind, the foam can travel long distances because the particles may separate when airborne. Windscreens can also be configured around scaffolding and man-lifts. It may also be necessary to enclose and preheat the area to the acceptable temperature range for the foam system being used. In preparation for spraying, a test spray should be performed to ensure that the proper processing temperatures and pressures are set. The specified settings per the TDS are general starting parameters, it is important to observe the foam and the reaction time of the reacting mass and make additional adjustments as needed.

## COLD STORAGE APPLICATIONS

Cold storage facilities require vapor barriers. Vapor barriers are typically applied to the warm side of the insulation system. Closed-cell spray foam is classified as a class II vapor barrier above a certain thickness. When spraying in freezers, use 1" (25mm) lift passes. Thicker passes in deep freezers can lead to severe cracking. Freezers require closed-cell 2 lb foam, using lower density foam or an over catalyzed foam can also lead to severe cracking. Proper surface preparation may be necessary prior to the application of closed-cell spray foam in cold storage applications. Contact the Huntsman Building Solutions Technical Service Department for more information about cold storage applications.

Materials used to construct refrigerated rooms are affected by temperature changes, like all common building materials. Gradual lowering of the temperature is designed to eliminate problems stemming from these temperature changes while at the same time withdrawing construction moisture, and testing the vapor barrier and mechanical system.

## HOW TO AVOID OVER SPRAY

Over spray with spray foam occurs for a variety of reasons such as spraying the product too cool, applying the product to a substrate that is too cold, not spraying perpendicular to the surface, and high wind conditions. Flash coating to warm the surface is not a recommended practice and may create unwanted over spray. Flash coats are very thin and may not have enough exothermic reaction present to properly cure. Excessive over spray may lead to blisters or delaminating of additional passes of foam or coating. Over spray can travel long distances and may adhere to objects left unprotected such as windows, buildings and automobiles. Protect anything that should not get foamed.

## LIMITATIONS OF USE

Spray foam insulation described in this Application Guide is a combustible material with a maximum continuous service temperature of 180°F (82°C). Spray foam insulation should not be used in direct contact with chimneys, flues, steam pipes, recessed lighting or other heat emitting devices. Consult the listing or label of such materials for clearance to combustibles. A minimum clearance of 3" (76mm) should be maintained when applying around recessed lighting or other heat emitting devices (IRC Section R302.14), and it's important to avoid spraying inside electric outlets or junction boxes. Where factory-built chimneys pass through insulated assemblies, an insulation shield made of steel having a thickness of not less than 0.0187 inch (No 26 gage) shall be installed to provide clearance between the chimney and the insulation. Insulation shields provided as part of a listed chimney system shall be installed in accordance with the chimney manufacturer's installation instructions (IRC Section 1005.8). For applications for spray-applied insulation around ductwork, attic hatches, pull-down stairways, windows, pipes or plumbing see to the applicable code. Properly prep and secure any material or surface that should not get insulated. If in doubt about the substrate temperature or surface conditions, a trial application should be conducted to check foam quality and spray performance. Water on the surface from rain, fog, condensation, etc. will react chemically with the isocyanate, adversely affecting the foam and physical properties, particularly adhesion.

## COLD WEATHER PROCESSING

Low temperatures affect the foaming process in two ways.

1. Chemical reactions can be slowed due to reduced exothermic energy within the expanding mass, which could lead to poor cell structure, dripping and voids from slow plastic formation
2. This reduced temperature often leads to reduced yield.

The temperature and type of substrate has a greater influence on the quality of the foam than the temperature of the air because the rate of heat transfer from liquid to air is much slower than the rate from liquid to substrate. If the substrate temperature is too low, or it is a highly conductive material such as metal or concrete, the heat produced by the chemical reaction may be drawn into the substrate so rapidly that plastic formation and cell generation becomes very slow, thus reducing yield. It is not a good practice to use the heated chemicals to warm the surface (flash coat). Instead, if the substrate to be sprayed is too cold to produce proper foam, the substrate should be heated using an indirect-fired heater or the foam should be sprayed on a warmer substrate on a warmer day. No open flame or direct heating is permitted during the spraying process.

**THERMAL AND UV PROTECTION**

Combustible spray foam insulation must be separated from the living space by a thermal barrier in accordance with applicable codes. This product must not be used when the continuous service temperature of the substrate or foam is above 180°F (82°C). Spray foam must be protected from direct exposure to sunlight; incidental exposure during construction may cause surface discoloration but will not degrade the performance of the foam.

**VENTILATION**

Ventilate during spray foam application and for a minimum of 24 hours following the application or until no objectionable odor remains. If not adequately ventilated during and shortly after application, the odors can be absorbed in adjacent materials such as fibrous insulation, wood framing and household or stored items. Sheet plastic should be placed over any absorbent material that cannot be removed during the spray and ventilation operation.

**CHEMICAL STORAGE**

Spray foam insulation's B-side resin is packaged in totes or in closed-head metal drums. A-PMDI is packaged in totes or in closed-head metal drums. Products' B-side resin and A-side isocyanate should be stored within their respective temperature ranges as described in Table 1 below. The storage temperature for containers of chemicals used to make spray foam insulation is very important. Installers storing these chemicals should refer to manufacturer information to confirm proper storage practices. The materials should be kept away from direct sunlight. The transfer pump should be removed and the bungs of the A-PMDI and B-side drum tightly closed after use. B-side resin's shelf life should be respected. See the products' B-side SDS for additional information.

**LOCATIONS/APPLICATIONS**

HBS offers closed-cell and open-cell spray foam products that can be used as a nonstructural thermal insulating material in some or all Types of construction (Types I, II, III, IV & V) under the IBC, and in dwellings under the IRC. Please refer to the appropriate product ESR evaluation report for the specific Types of construction each product can be used in. Closed-cell spray foam insulation can be used installed inside or outside. Such applications include, but are not limited to, external walls, within wall cavities, attics and crawl spaces when installed in accordance with applicable codes. Open-cell spray foam insulation is only intended to be used indoors and above grade. Its applications include within wall cavities, floor/ceiling assemblies and attics when installed in accordance with applicable codes. Local codes should be consulted regarding appropriate thermal and ignition barriers for use with the product where applicable. For additional information, refer to the products' respective Evaluation Service Reports on Huntsman Building Solutions' website.

**UNVENTED CRAWL SPACE APPLICATIONS**

HBS spray foam insulation shall be applied directly to the crawl space walls, bands of the floor system and in direct contact with framing materials. Do not use separator sheets between the insulation and the concrete/block masonry wall, as this will provide paths for air leakage around the insulated layer. Building Codes require that exposed earth in an unvented crawl space be covered with a continuous Class I Vapor Retarder to avoid excessive moisture loads in the crawl space. The Class I Vapor retarder shall be sealed or taped, its edges shall extend at least 6" up the crawl space wall and shall be attached and sealed to the wall and spray foam applied overtop to prevent any air leakage. Refer to Figure 2 for typical details.

**TERMITE INSPECTION GAP**

The use of insulation in "very heavy" termite infestation probability areas shall comply with 2021 IBC Section 2603.8 & 2021 IRC Section R318.4. As such, in areas where the probability of termite infestation is "very heavy", extruded and expanded polystyrene, polyisocyanurate and other foam plastics shall not be installed on the exterior face or under interior or exterior foundation walls or slab foundations located below grade. The clearance between foam plastics installed above grade and exposed earth shall be not less than 6 inches (152mm). Refer to local codes that may require a gap at the top of the foundation walls for termite inspection purposes. The SPF & Pest Management industry developed a solution to maintain building performance and permit visual termite inspection. One solution that provides the inspection gap (no foam) on the top (if required) and 6" gap on the bottom of the foundation wall is not to install spray foam over the band joist and mudsill. In this case, the framing members must be caulked at all the joints between the band joists, floor joists, the floor sheathing above, and to the top of the foundation, as can be seen on Figure 3. A non-rigid removable insulation would then be placed between the joists to insulate the band joist and the mudsill. This will allow for the periodic inspections required to maintain termite warranties/bonds. Moreover, in very heavy termite infestation areas, it is not recommended to install spray foam directly on the soil as it may be an at-risk area that would require access for visual inspection.

Figure 2

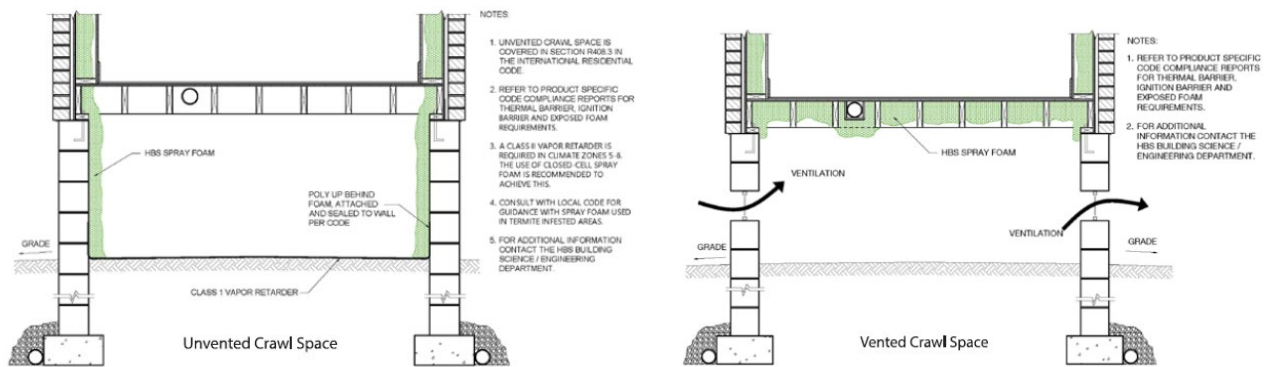
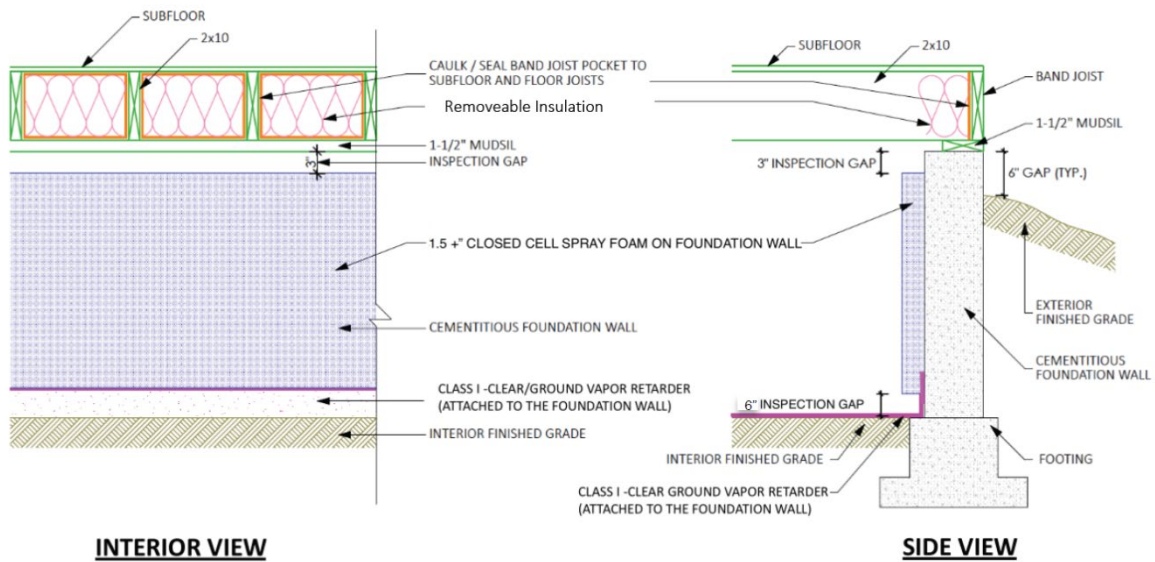


Figure 3 – Unvented/Sealed Crawlspace with 1.5” + Closed-Cell Spray Foam on Foundation Wall and Removable Insulation on Band Joist



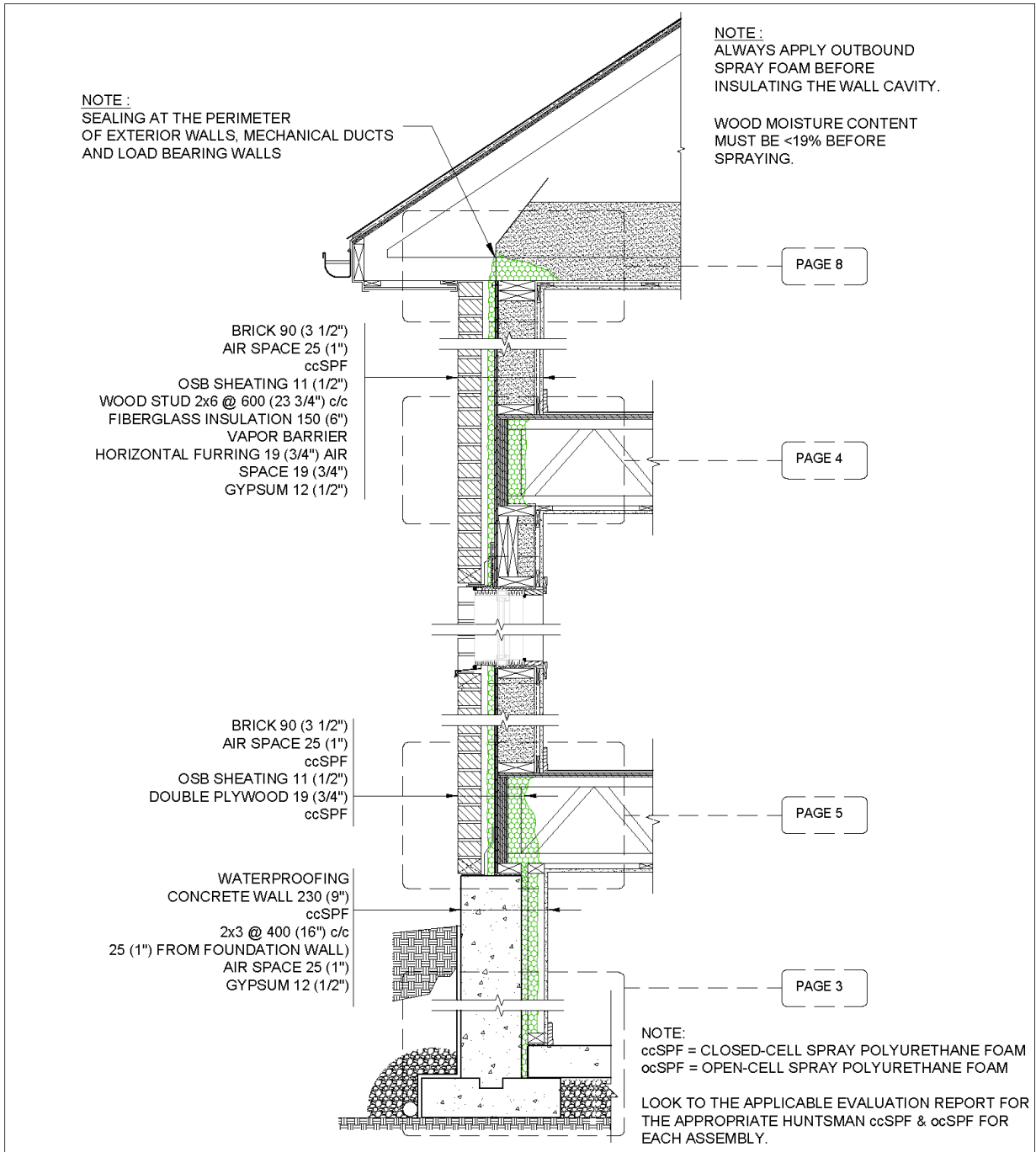
**FOR MORE INFORMATION**

Visit [www.huntsmanbuildingsolutions.com](http://www.huntsmanbuildingsolutions.com) or call 817-640-4900 for more information on health, safety and environmental protection with respect to polyurethanechemicals.

Disclaimer: The information herein is to assist customers in determining whether our products are suitable for their applications. We request that customers inspect and test our products before use and satisfy themselves as to contents and suitability. Nothing herein shall constitute a warranty, expressed or implied, including any warranty of merchantability or fitness, nor is protection from any law or patent inferred. All patent rights are reserved. The foam product is combustible and must be protected in accordance with applicable codes. Protect from direct flame and spark contact, around hot work for example. The exclusive remedy for all proven claims is replacement of our materials.

APPENDIX A

**Construction drawings representing typical assembly details and locations where spray foam is certified to be used in residential buildings.**



2x6 WALL - BRICK SYSTEM SECTION



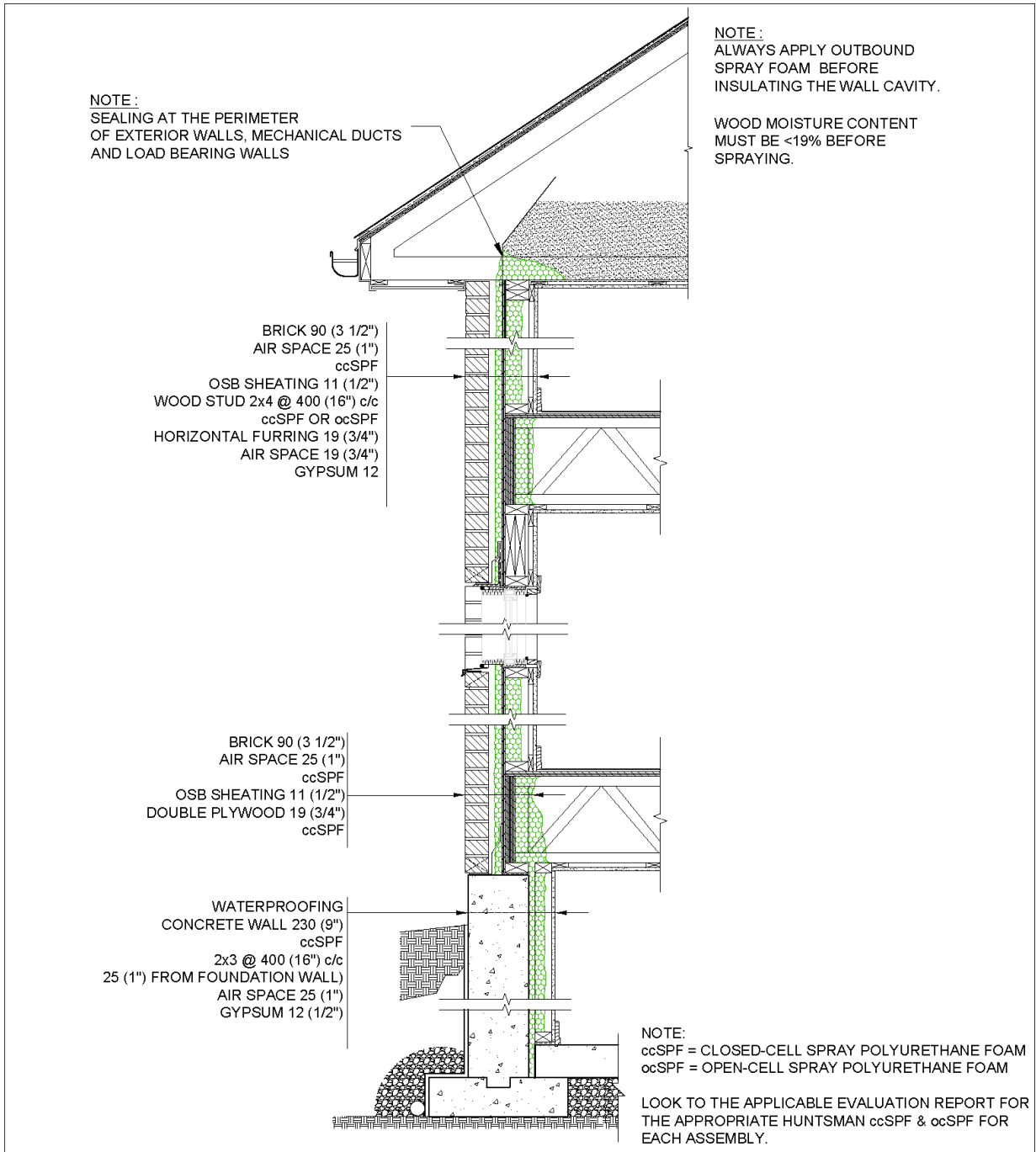
TYPICAL DETAIL WOOD FRAMING

Scale: 1:20

Page 1

08-09-2023





2x4 WALL - BRICK SYSTEM SECTION

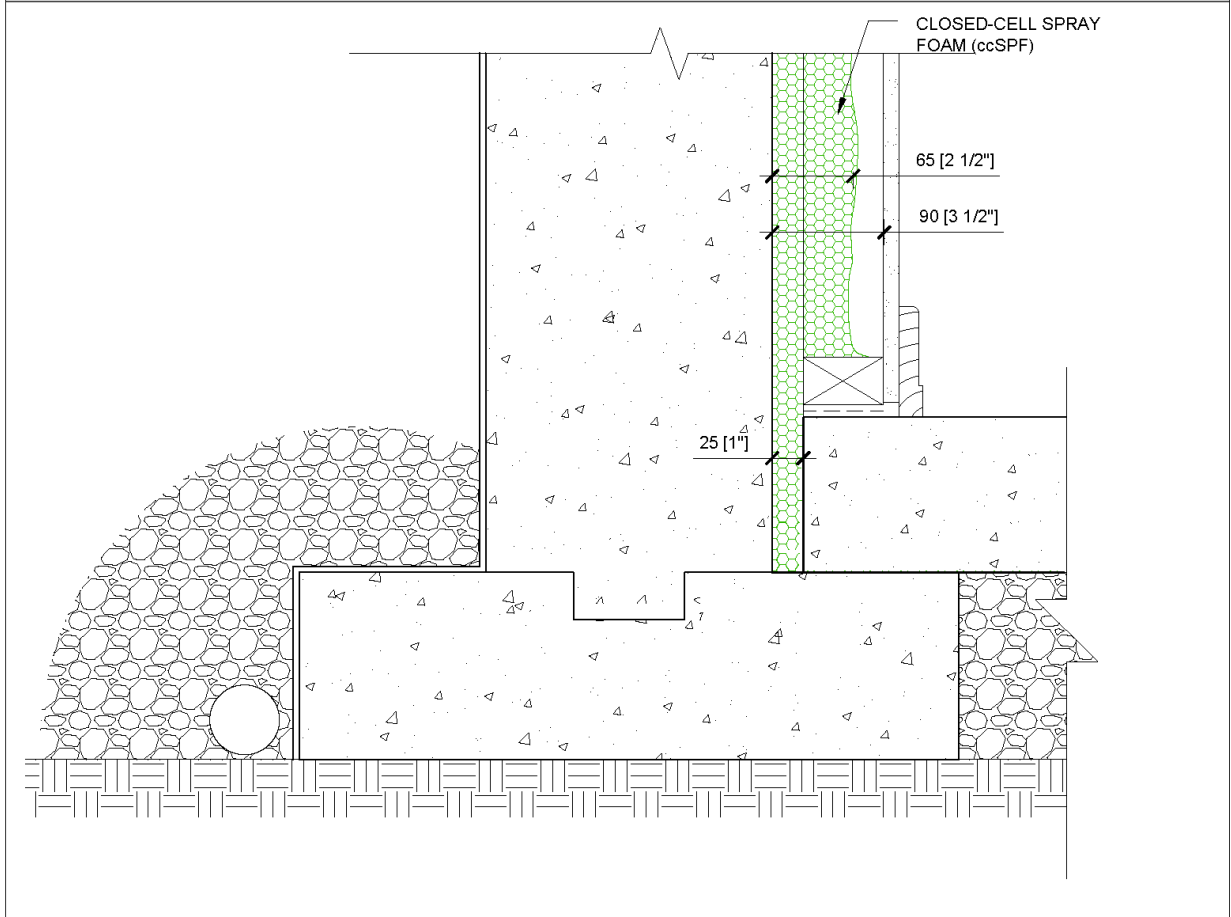
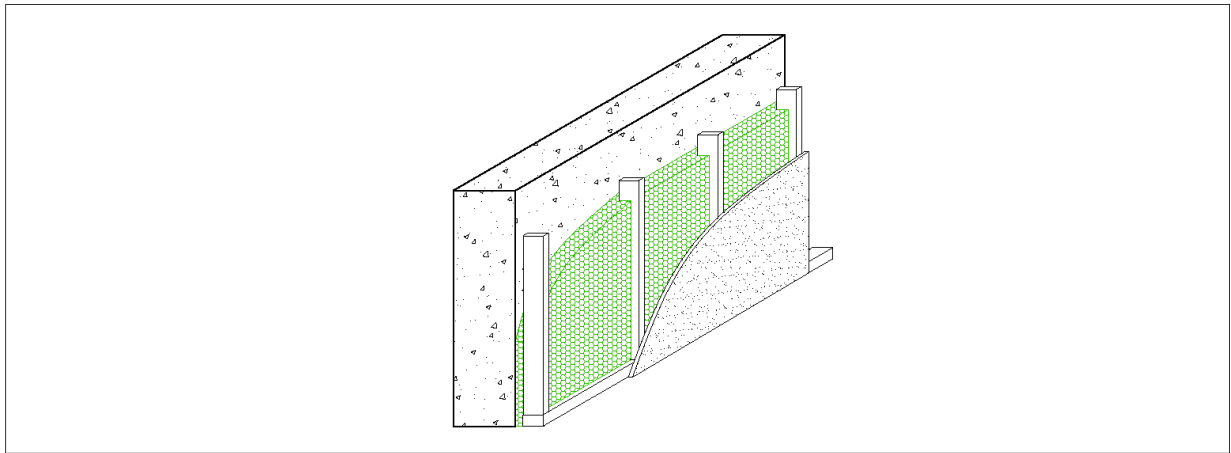


TYPICAL DETAIL  
WOOD FRAMING

Scale: 1:20

Page 2

08-09-2023



FOUNDATION

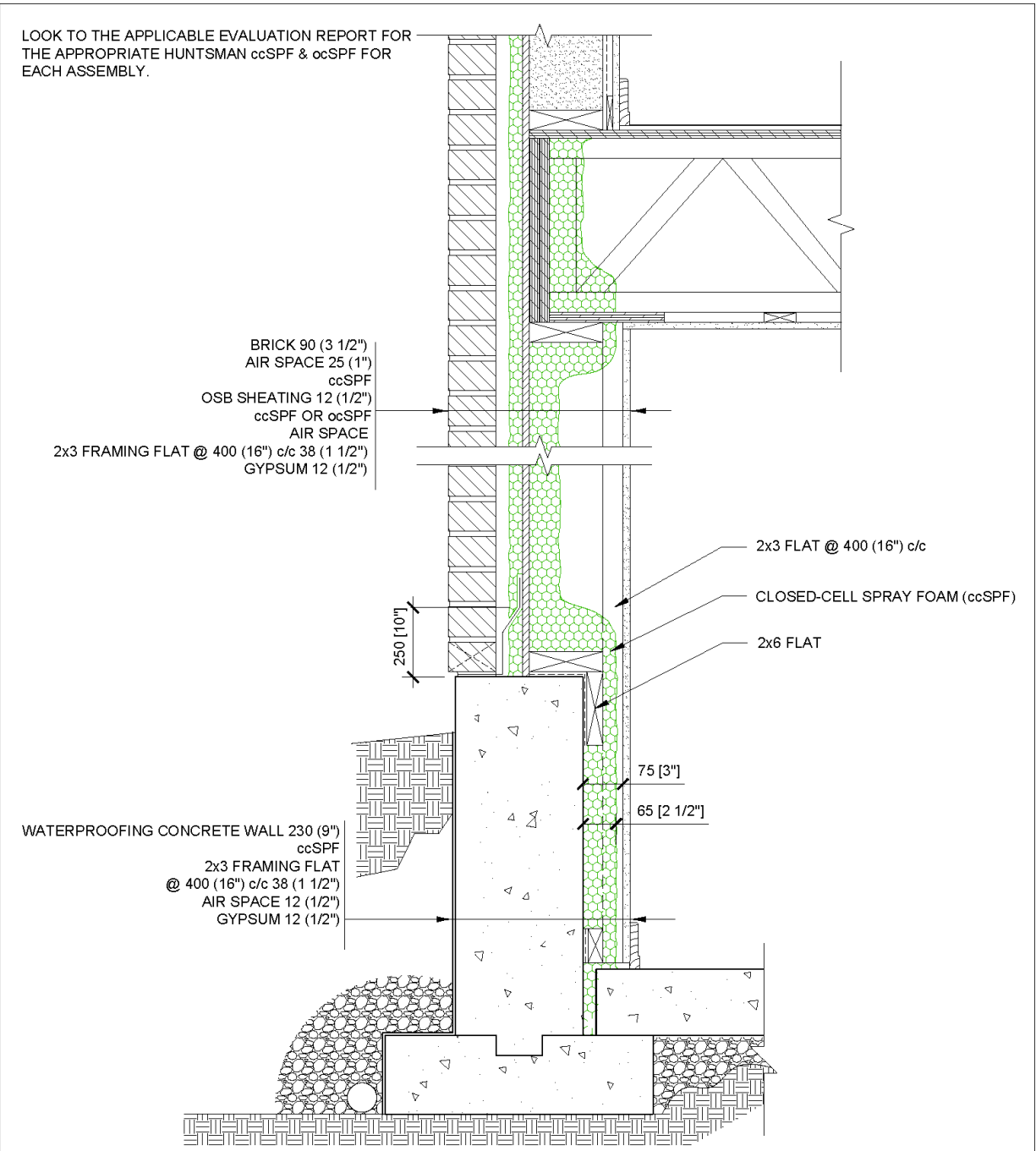


TYPICAL DETAIL  
WOOD FRAMING

Scale: 1:5

Page 3

08-09-2023



2x6 WALL - BRICK  
FOUNDATION KNEE WALL

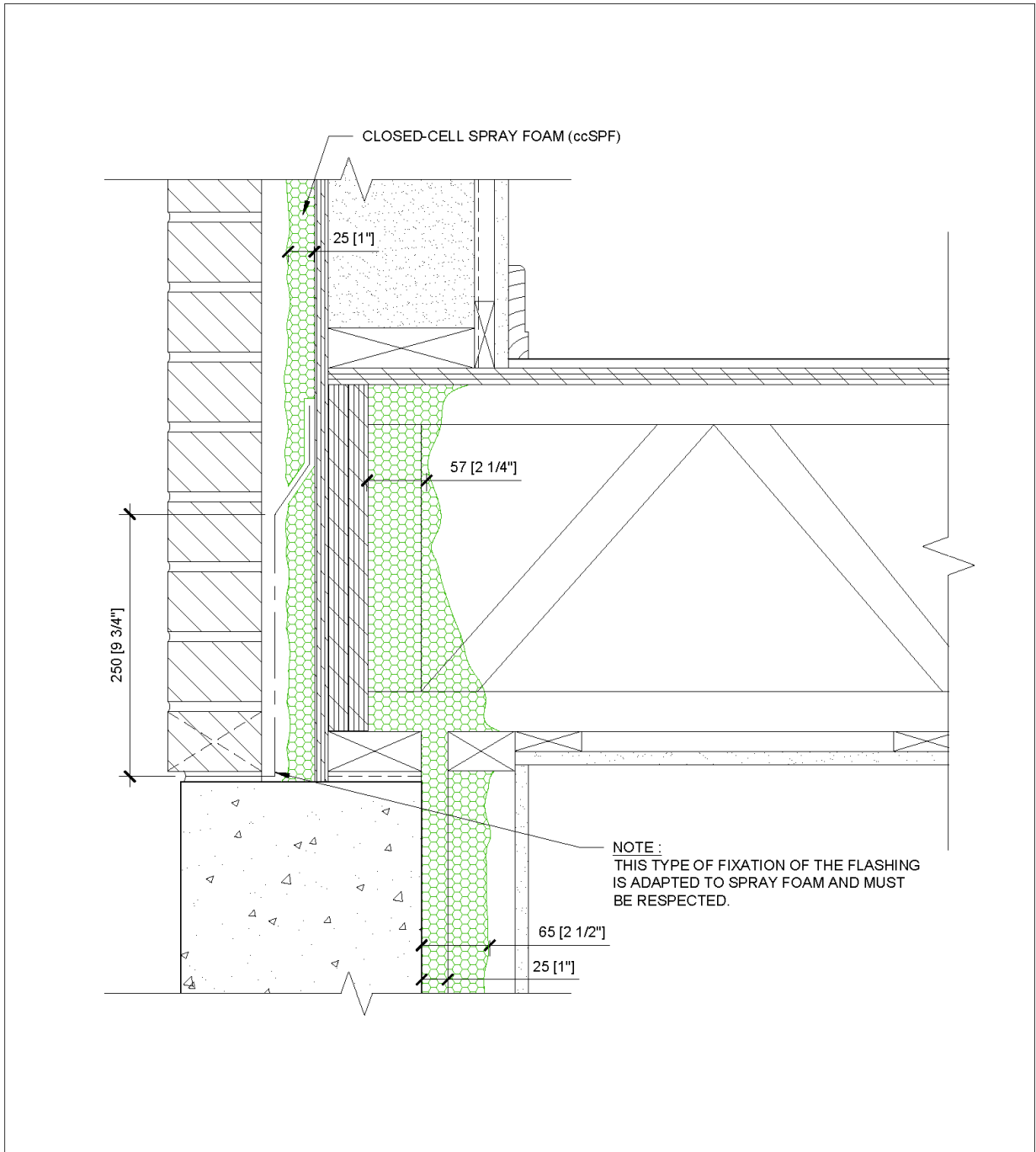


TYPICAL DETAIL  
WOOD FRAMING

Scale: 1:10

Page 4

08-09-2023



2x6 WALL - BRICK  
RIM JOIST - FOUNDATION

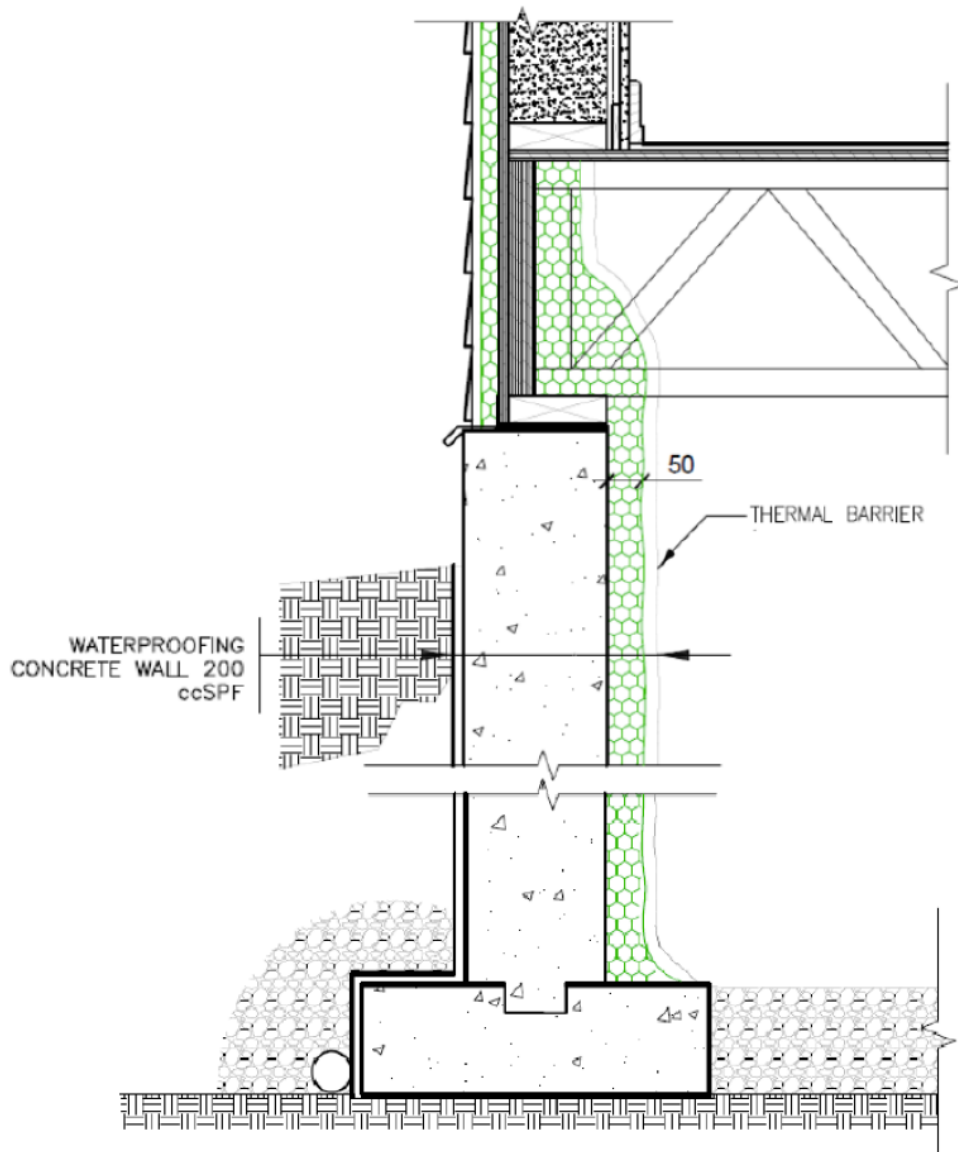
**HUNTSMAN**  
BUILDING SOLUTIONS  
1-888-783-0751 [www.huntsmanbuildingsolutions.com](http://www.huntsmanbuildingsolutions.com)

TYPICAL DETAIL  
WOOD FRAMING

Scale: 1:5

Page 5

08-09-2023



NOTE:  
LOOK TO THE APPLICABLE EVALUATION REPORT FOR  
THE APPROPRIATE HUNTSMAN ccSPF & ocSPF FOR  
EACH ASSEMBLY.

UNVENTED CRAWLSPACE

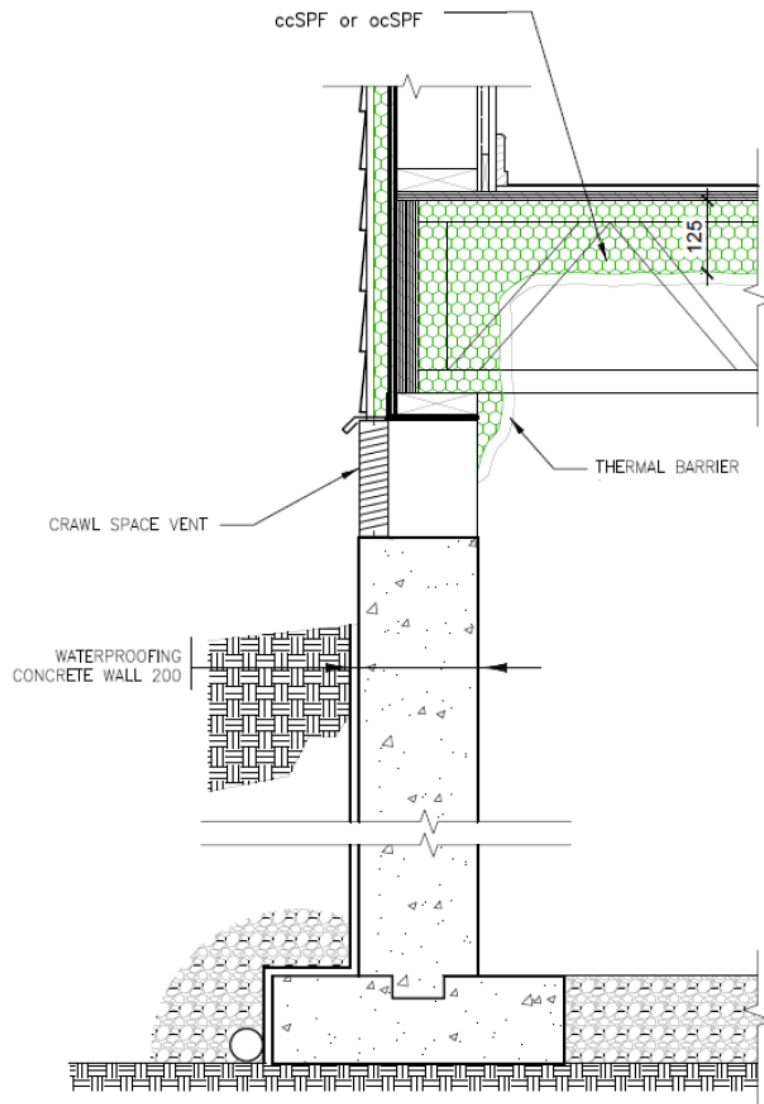


TYPICAL DETAIL  
WOOD FRAMING

Scale: 1:10

Page 6

08-09-2023



NOTE:  
LOOK TO THE APPLICABLE EVALUATION REPORT FOR  
THE APPROPRIATE HUNTSMAN ccSPF & ocSPF FOR  
EACH ASSEMBLY.

VENTED CRAWLSPACE CEILING

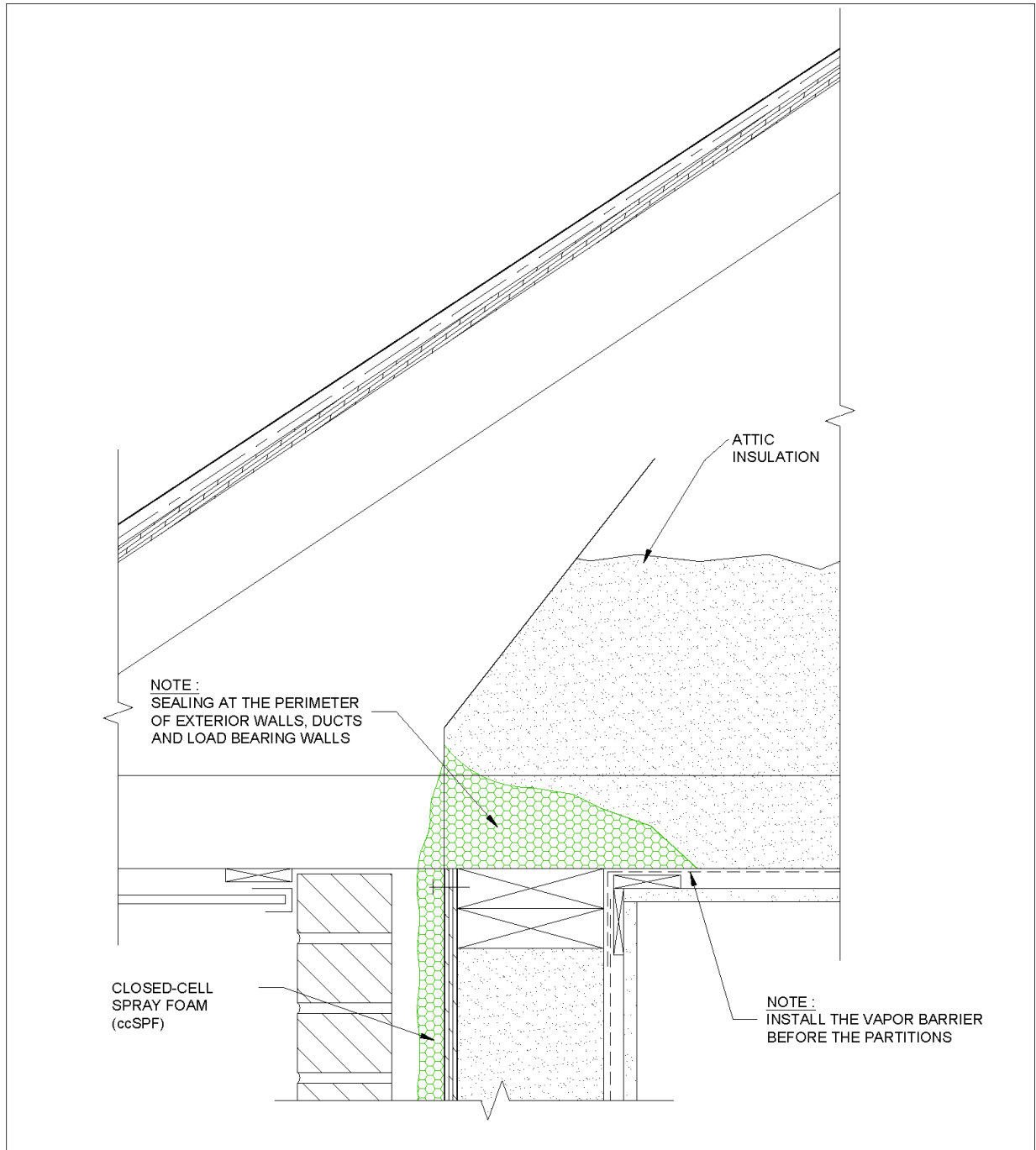
**HUNTSMAN**  
BUILDING SOLUTIONS  
1-888-783-0751 [www.huntsmanbuildingsolutions.com](http://www.huntsmanbuildingsolutions.com)

TYPICAL DETAIL  
WOOD FRAMING

Scale: 1:10

Page 7

08-09-2023



2x6 WALL - BRICK  
ATTIC JUNCTION

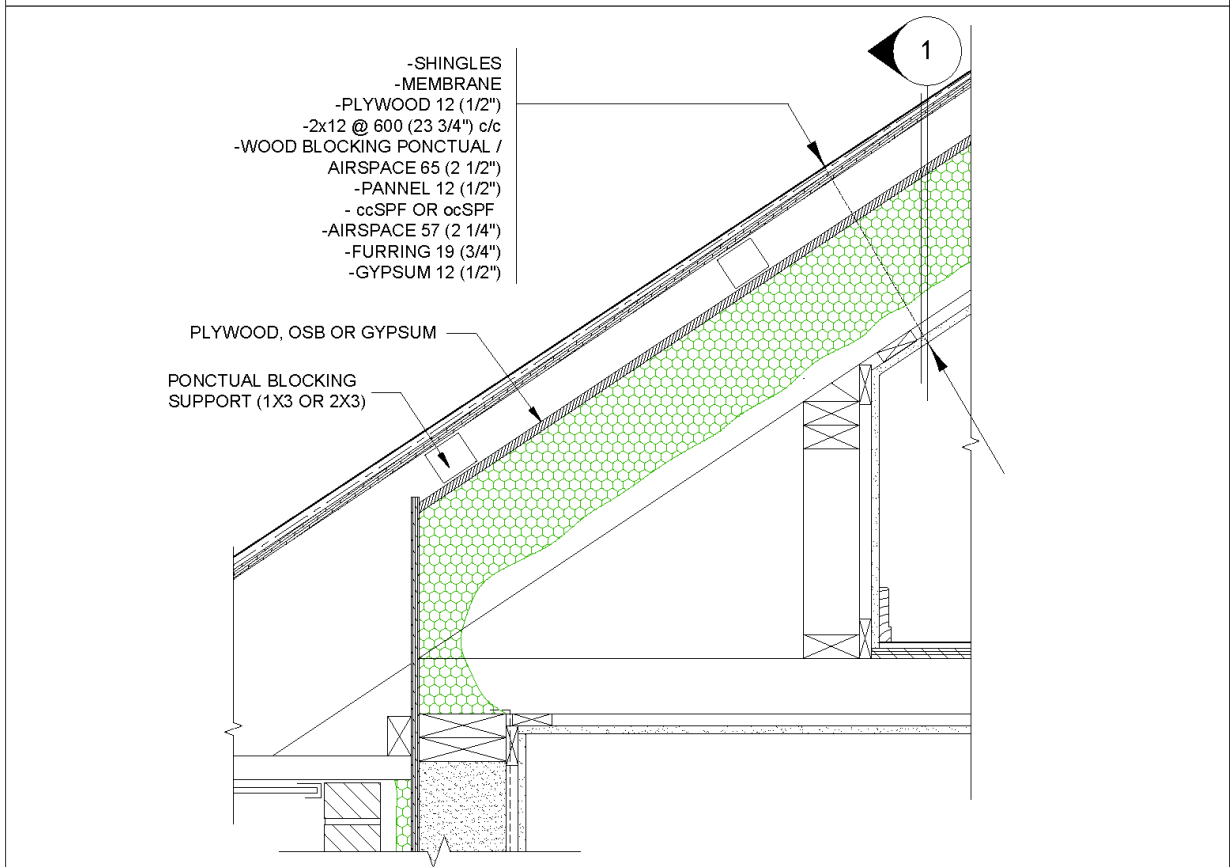
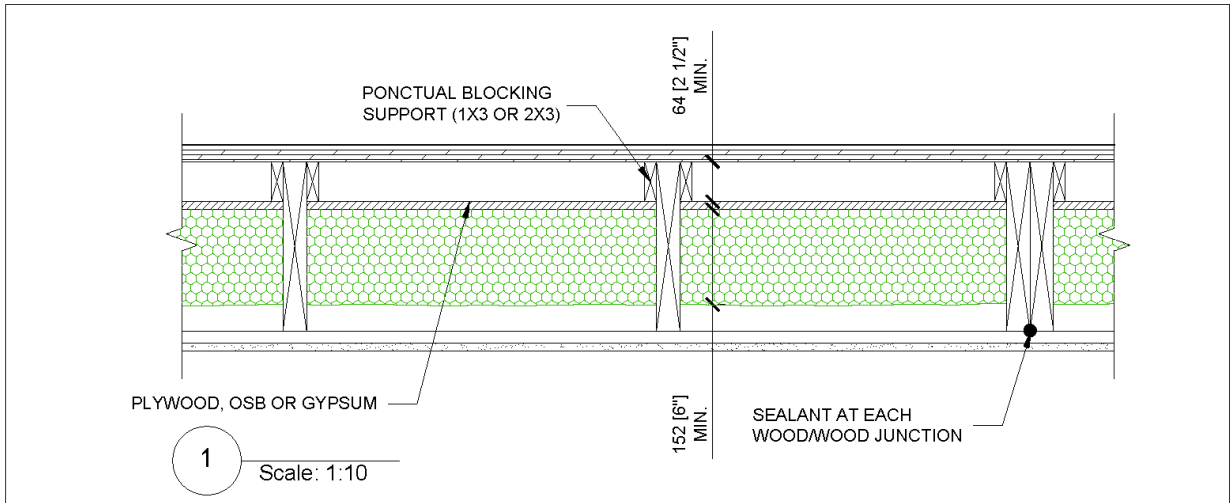
**HUNTSMAN**  
BUILDING SOLUTIONS  
1-888-783-0751    www.huntsmanbuildingsolutions.com

TYPICAL DETAIL  
WOOD FRAMING

Scale: 1:5

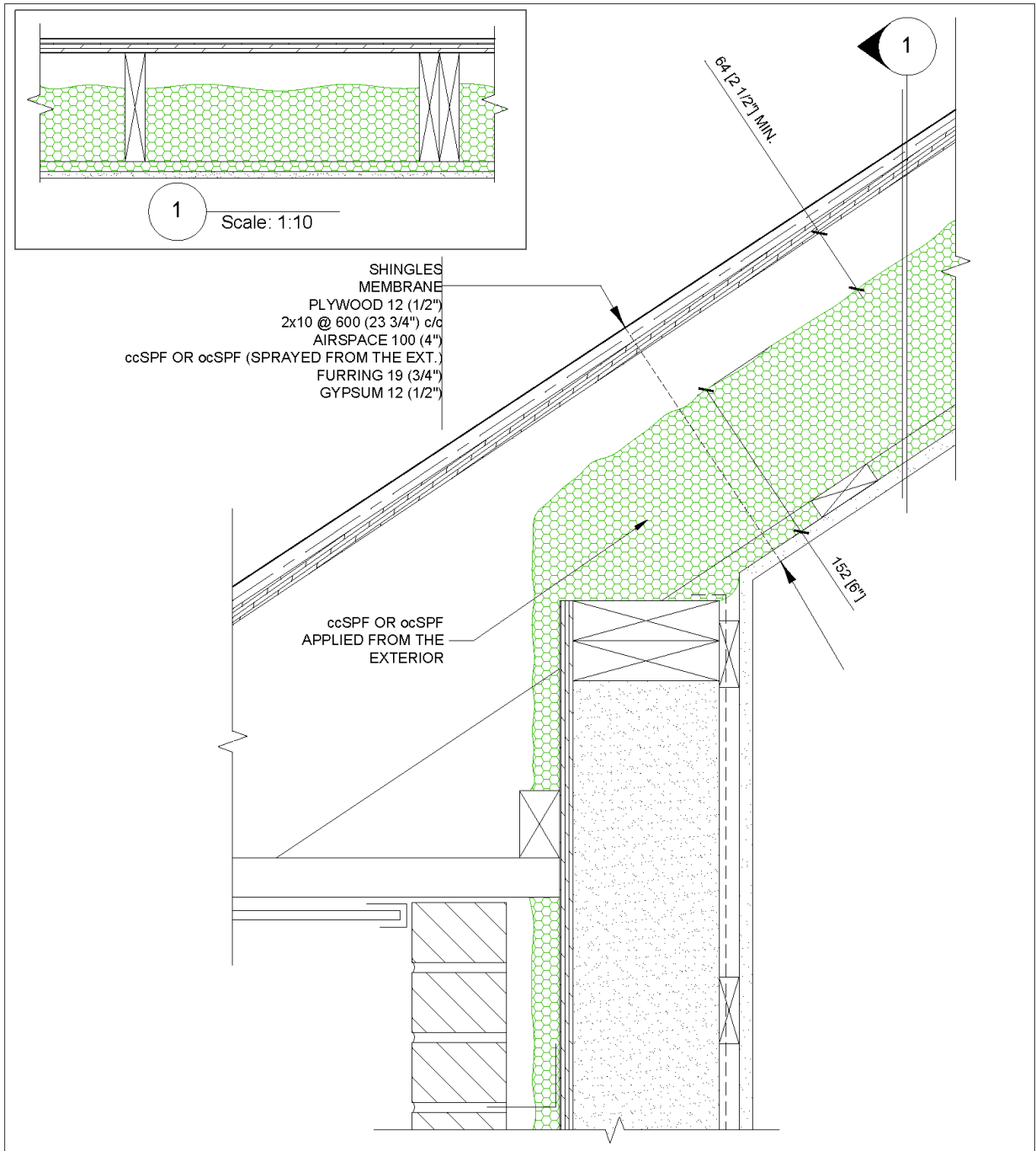
Page 8

08-09-2023



2x6 WALL - BRICK  
CATHEDRAL VENTILATED -KNEE WALL





SHINGLES  
MEMBRANE  
PLYWOOD 12 (1/2")  
2x10 @ 600 (23 3/4") c/c  
AIRSPACE 100 (4")  
ccSPF OR ocSPF (SPRAYED FROM THE EXT.)  
FURRING 19 (3/4")  
GYPSUM 12 (1/2")

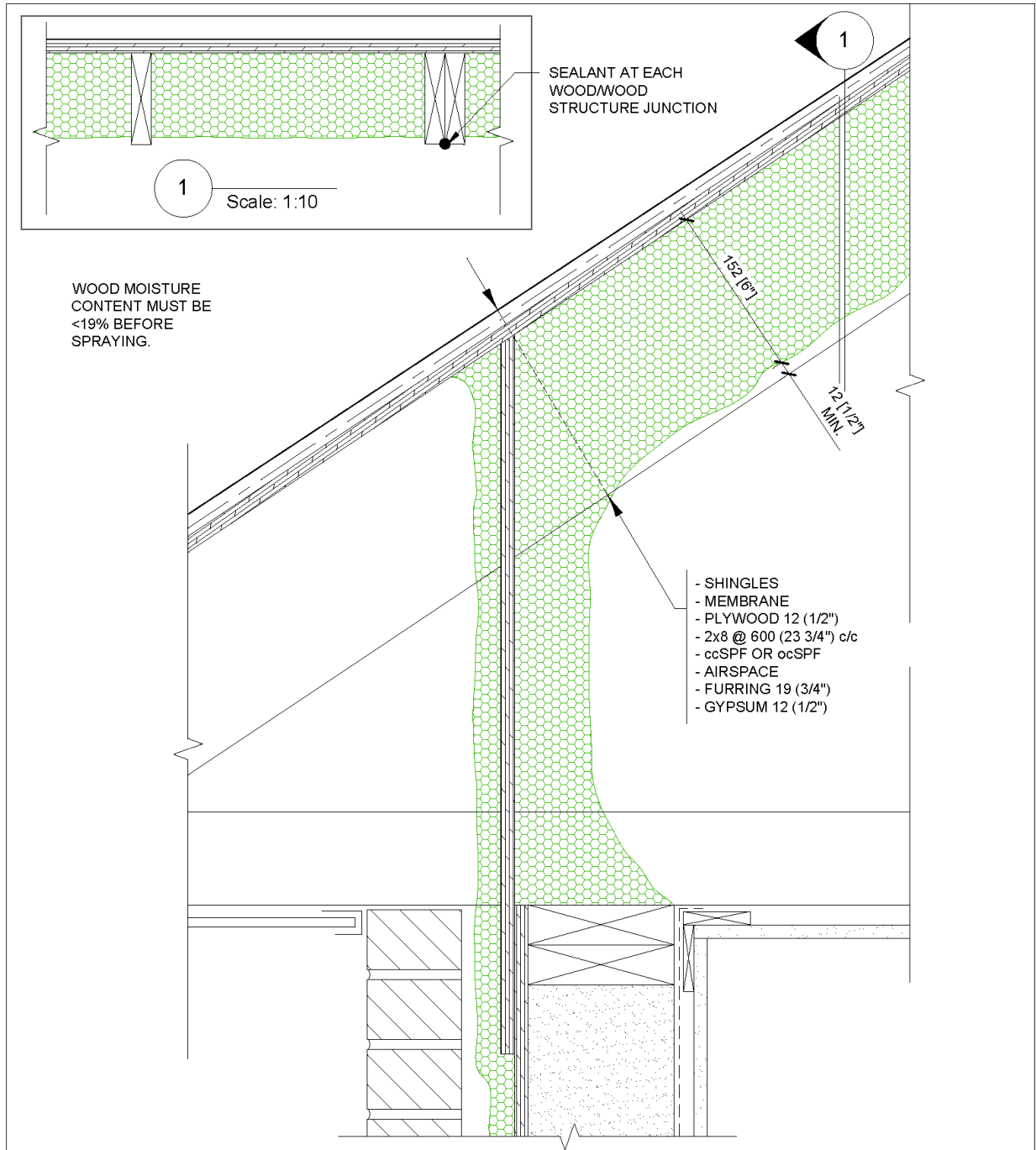
ccSPF OR ocSPF  
APPLIED FROM THE  
EXTERIOR

2x6 WALL - BRICK  
VENTILATED CATHEDRAL ROOF EXT.



TYPICAL DETAIL  
WOOD FRAMING

Scale: 1:5  
Page 10  
08-09-2023



2x6 WALL - BRICK  
UNVENTED ROOF

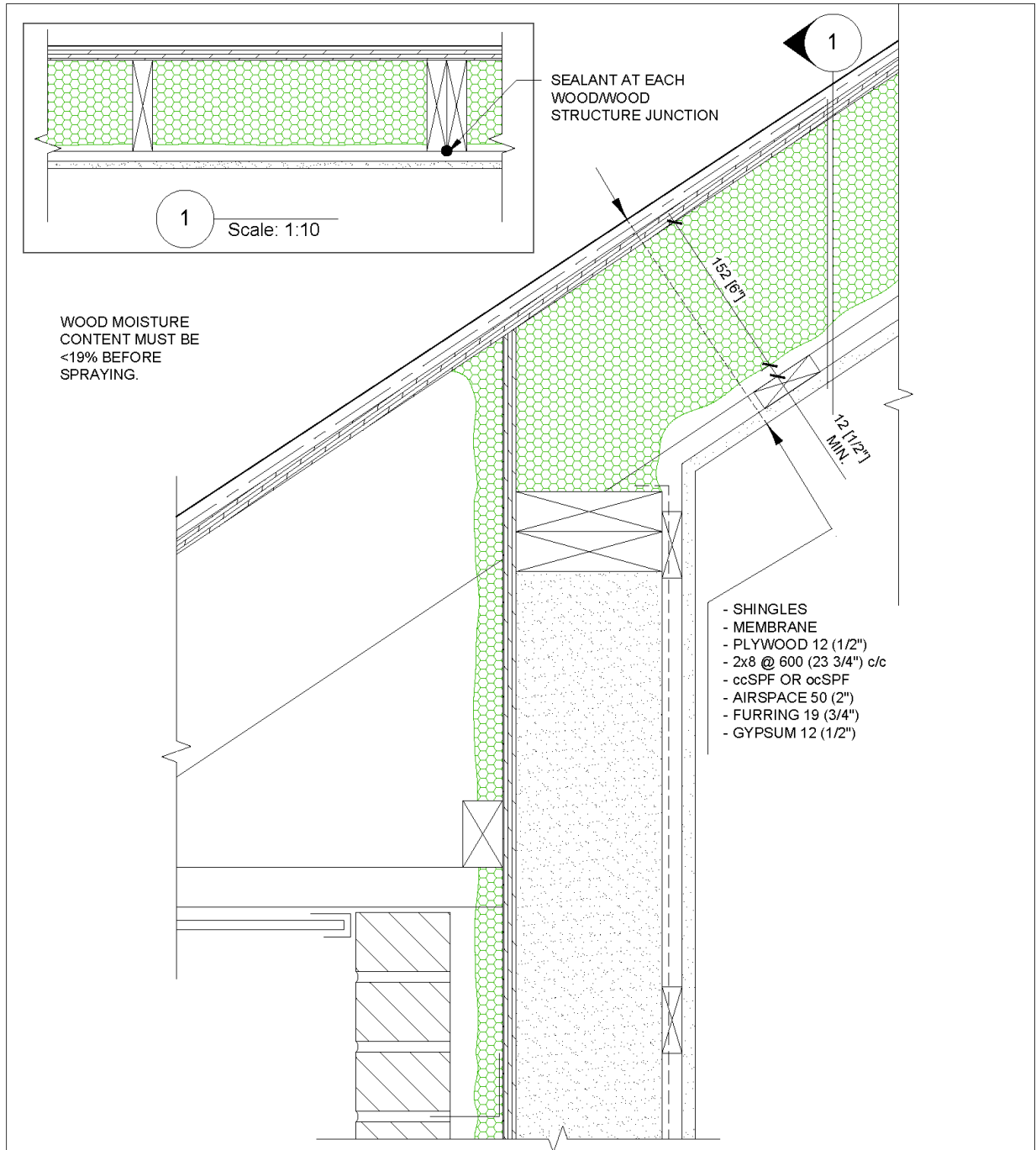
**HUNTSMAN**  
BUILDING SOLUTIONS  
1-888-783-0751 [www.huntsmanbuildingsolutions.com](http://www.huntsmanbuildingsolutions.com)

TYPICAL DETAIL  
WOOD FRAMING

Scale: 1:5

Page 11

08-09-2023



2x6 WALL - BRICK  
UNVENTED CATHEDRAL ROOF

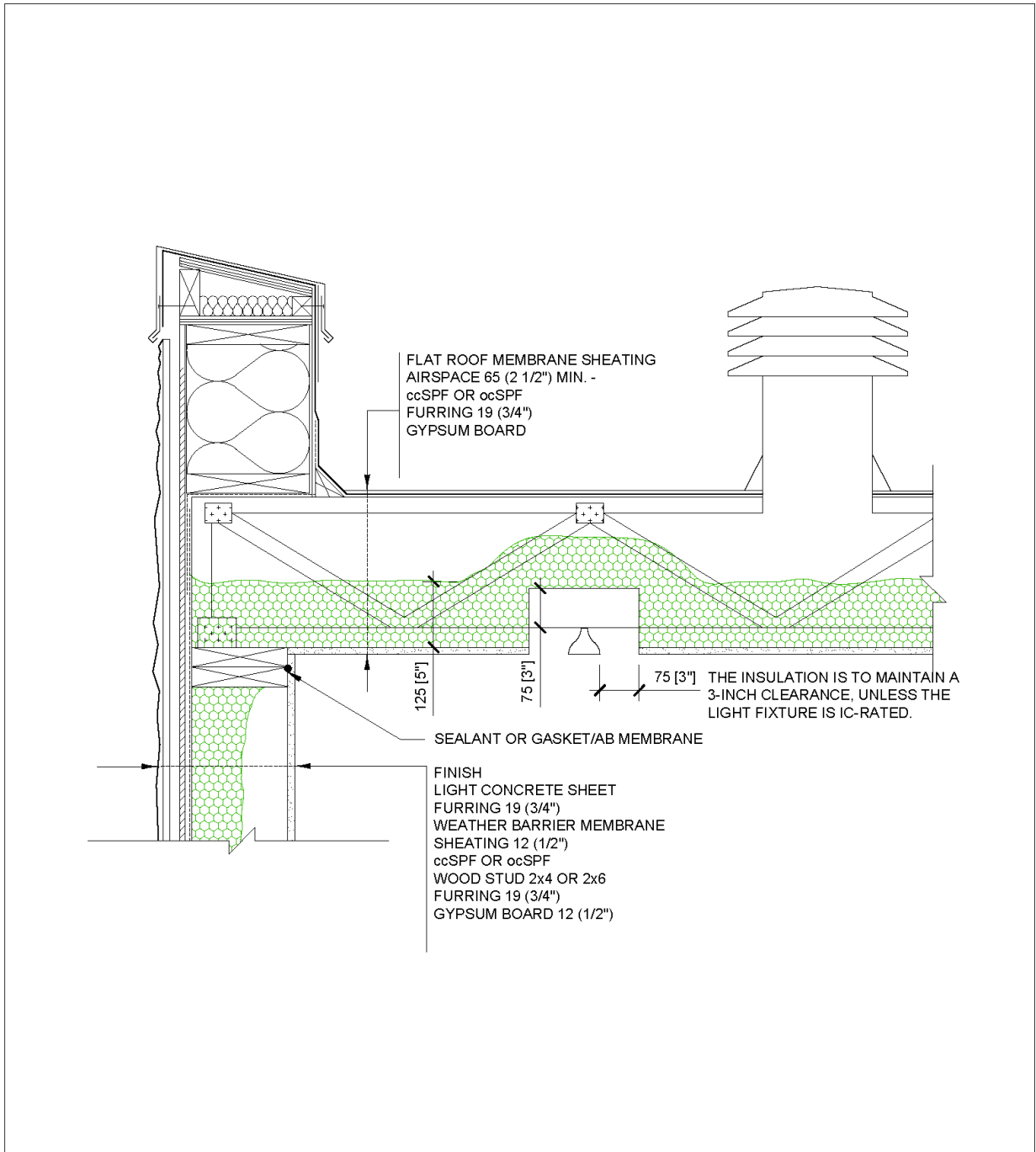


TYPICAL DETAIL  
WOOD FRAMING

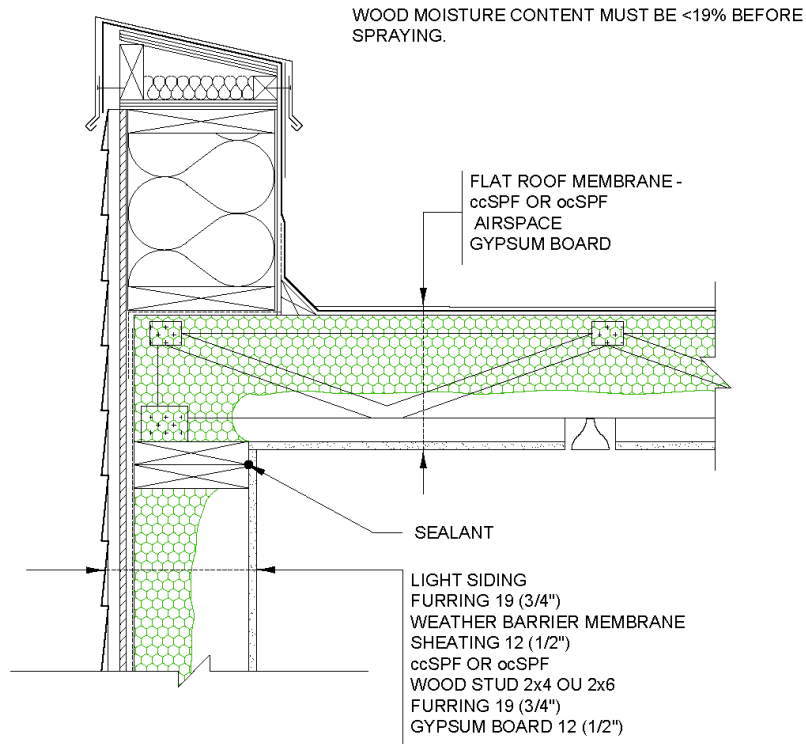
Scale: 1:5

Page 12

08-09-2023



FLAT ROOF - VENTILATED



FLAT ROOF - UNVENTILATED

